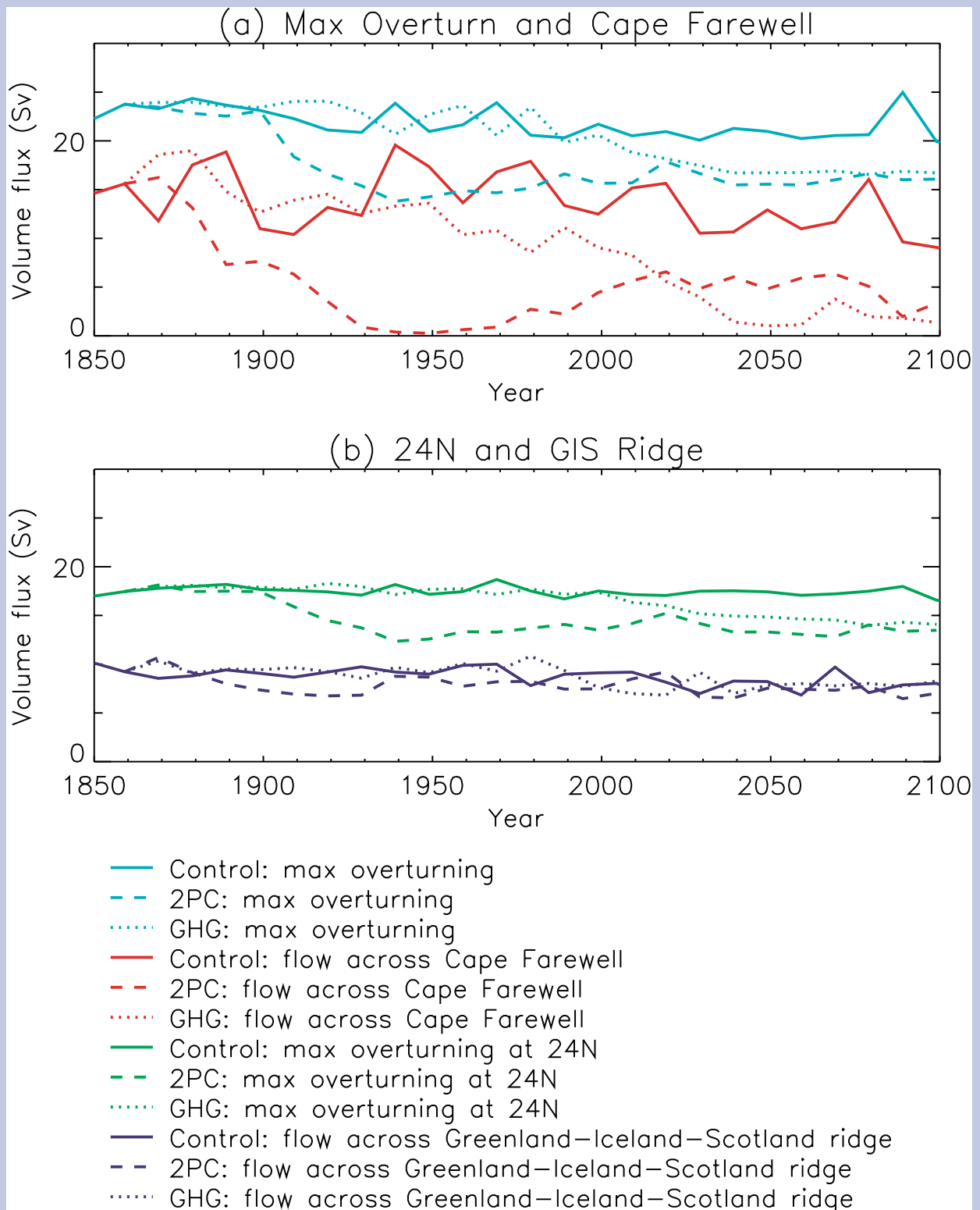


Anthropogenic Climate Change

Changes in the Thermohaline Circulation



Time series of various components of the thermohaline circulation as simulated by the HadCM3 model: a) Maximum meridional overturning at all latitudes in the North Atlantic (light blue) and volume flux of water denser than $\sigma_\theta = 27.5$ across Cape Farewell (red); b) as a) but at 24°N (green) and across the GIS ridge (dark blue). Solid line: control; dashed: 2% increase of CO_2 until 4x of control, dashed: observed and IS92a CO_2 concentrations. (from Wood et al, 1999)