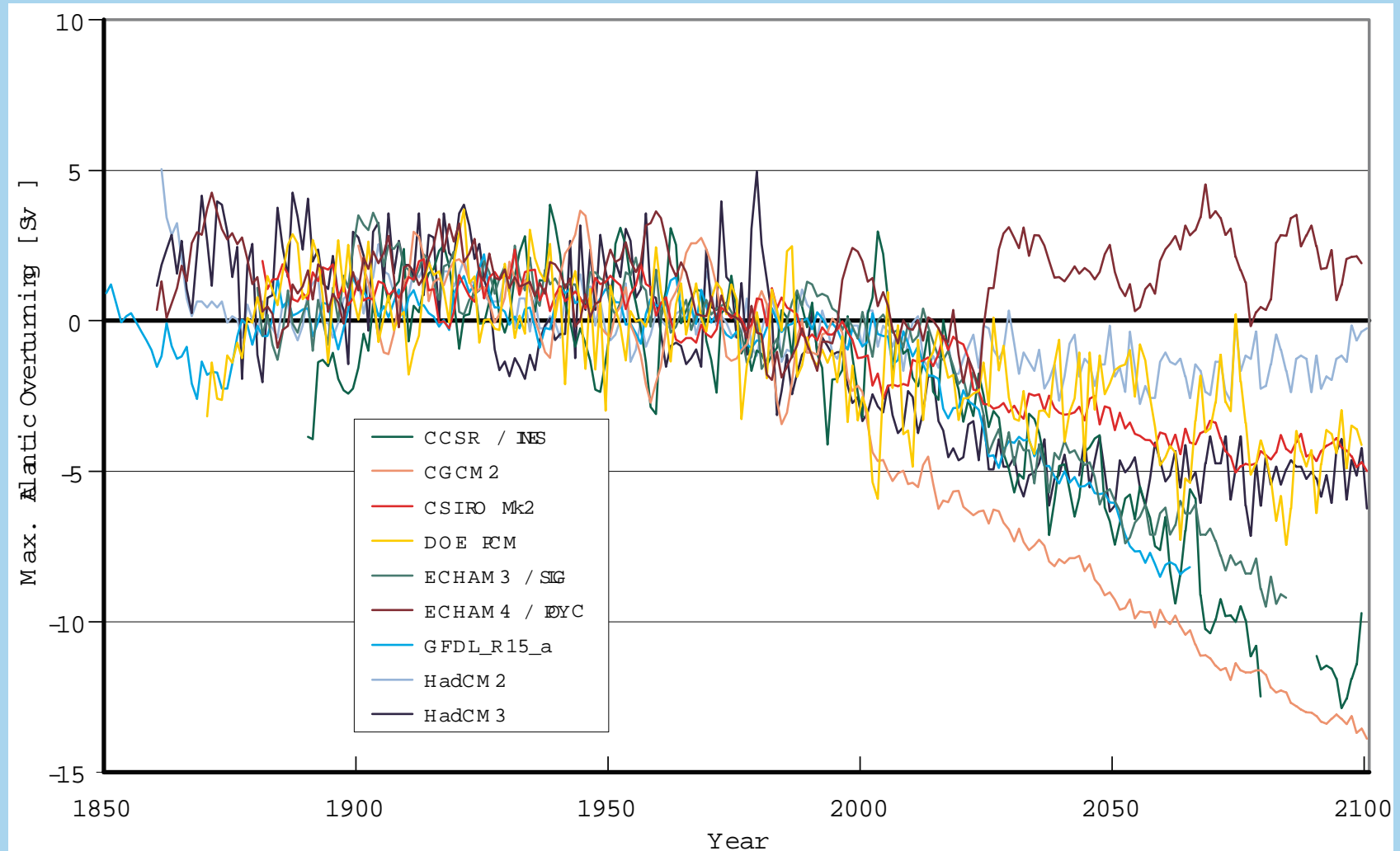


Atlantic Thermohaline Circulation Changes



Simulated water-volume transport change of the Atlantic „Conveyor belt“ (Atlantic overturning) in a range of global warming scenarios computed by different climate research centres. Shown is the annual mean relative to the mean of the years (1961 to 1990) in Sverdrups ($106\text{m}^3\text{s}^{-1}$) Past forcings with greenhouse gases and aerosols only, Future forcing scenario is the IS92a scenario (from IPCC TAR, 2001).