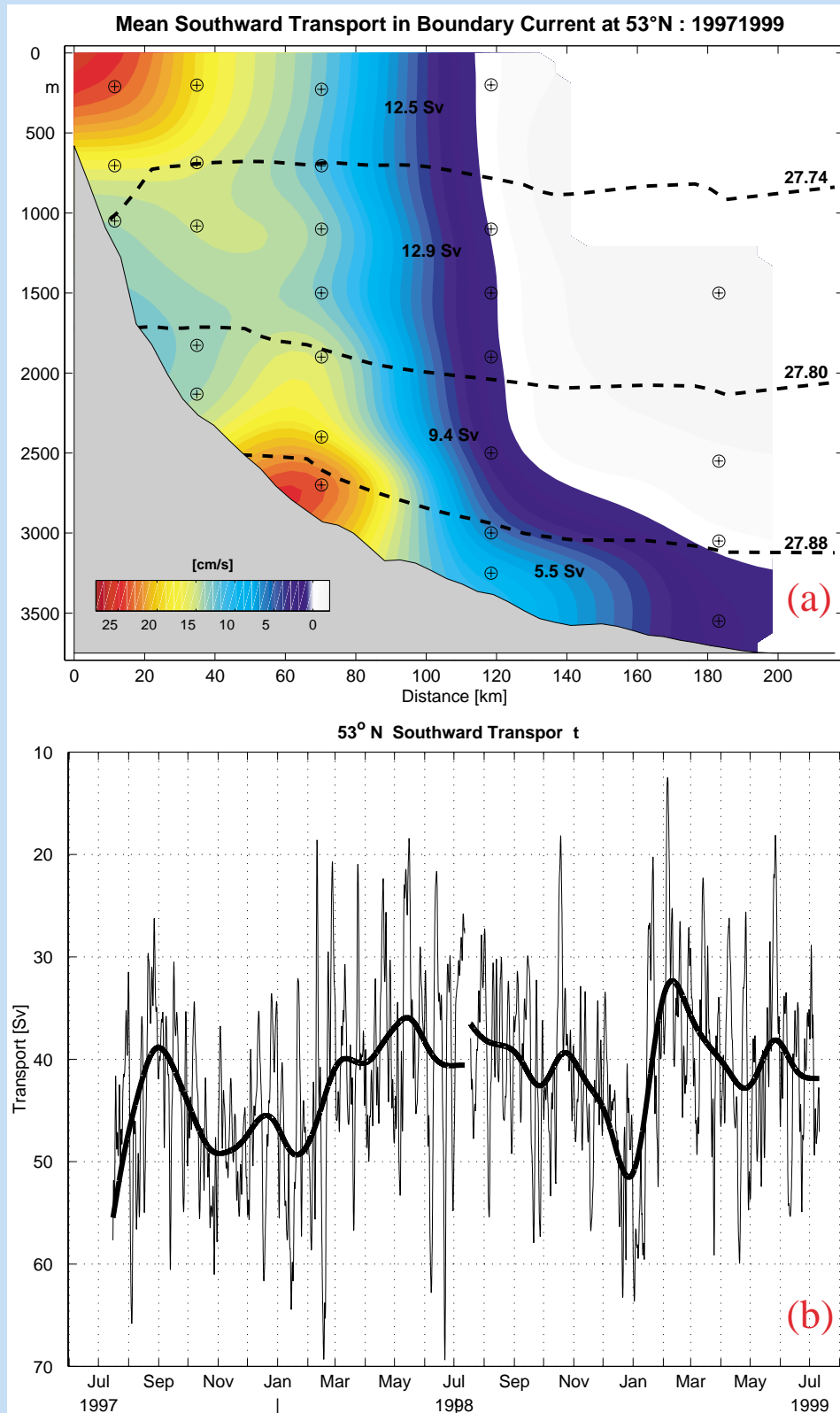


Currents and Transports in the Labrador Sea



Mean flow and transport of the boundary current at the exit of the Labrador Sea (a) determined from a moored current meter array near 53°N. Isopycnals (dashed lines) denote water mass boundaries for DSOW, ISOW, LSW and upper layer (from bottom to top).

Time series of southward transports (b) for the period summer 1997 to summer 1999. Heavy line is for 60-day lowpass filtered time series (courtesy J. Fischer and F. Schott, IfM Kiel).

