

NELSON MANDELA

UNIVERSITY

Marine Robotics Unit



MRU Solar Boat

Presented by Elbert Liebenberg

Introduction

- Electronic setup
 - Components used – Hardware, Software
- Basic operation
 - Mission setup
 - Mission execution
 - Log data storage
 - Data post processing
 - Mission setup (video)



Autonomous solar boat - construction

External

- Motors – Two 34lb thrust trolling motors
- 2 x Lithium Iron Phosphate 1400 Wh batteries
- 6 x 50W Flexible solar panels
- Max speed achieved 2.4 m/s



Autonomous solar boat - Hardware

Power distribution

- Maximum Power Point Tracker (MPPT)
- Brushed motor driver for 2 x 60A

Control & signal processing

- Pixhawk flight controller
- GPS for navigation
- Communication 868 MHz Radio - 40 km line of sight
- Radio controller transceiver
- Arduino Mega – Companion computer for data logging

NELSON MANDELA UNIVERSITY



Software

Off the shelf – Free

Configuration Software

ARDOPILOT



QGroundControl



Sensor payload

- Ping - down scan sonar
- Temperature sensor

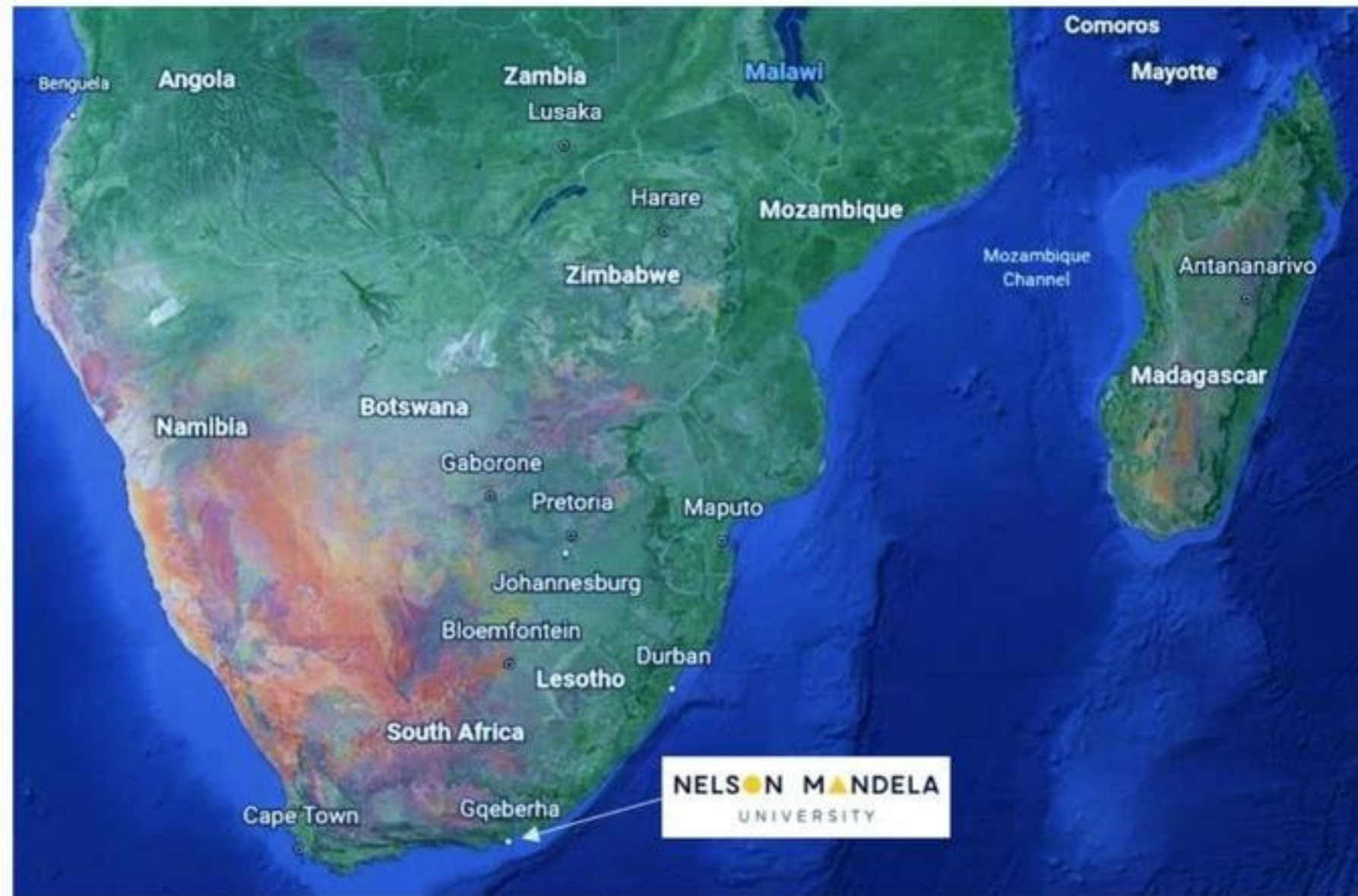


Communication Interface

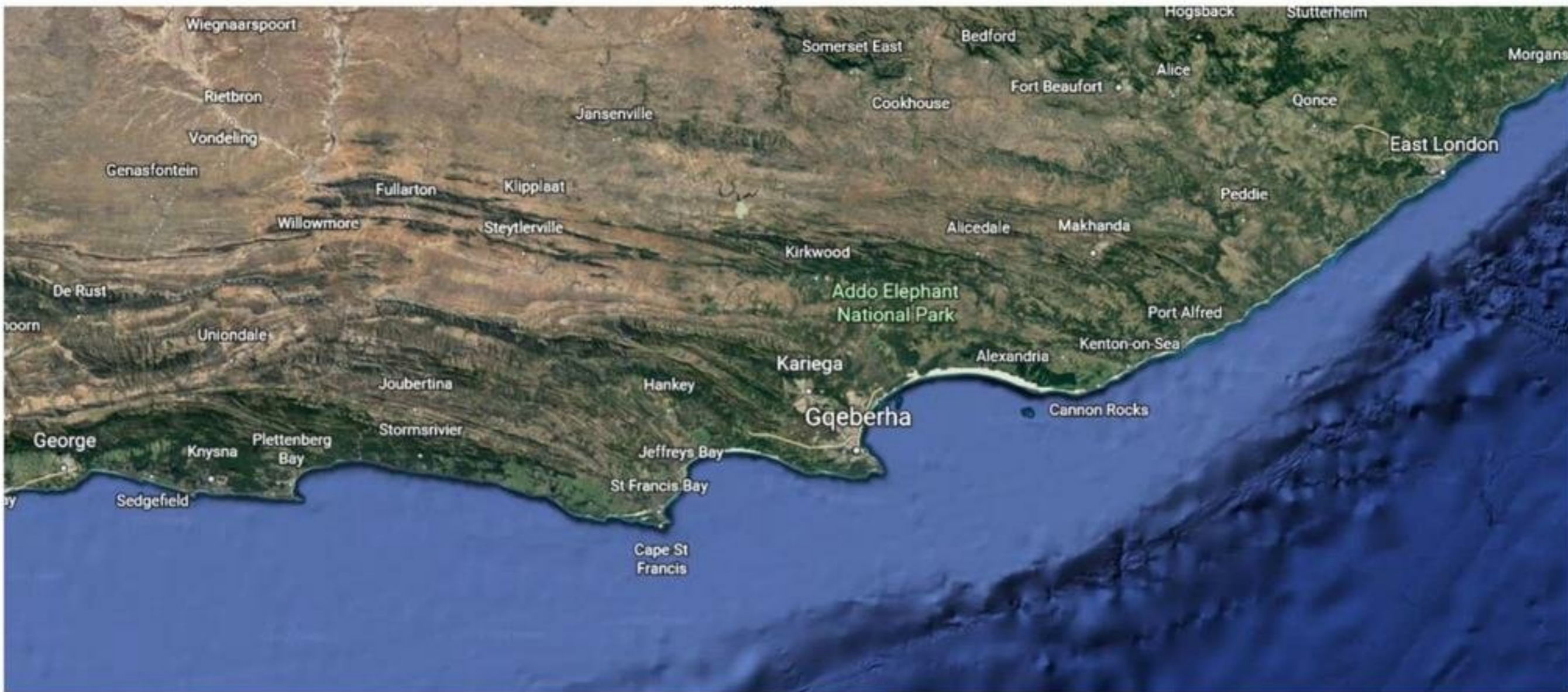
- Taranis X90 Plus Radio Controller
- 868Mhz Telemetry radio

Running a mission

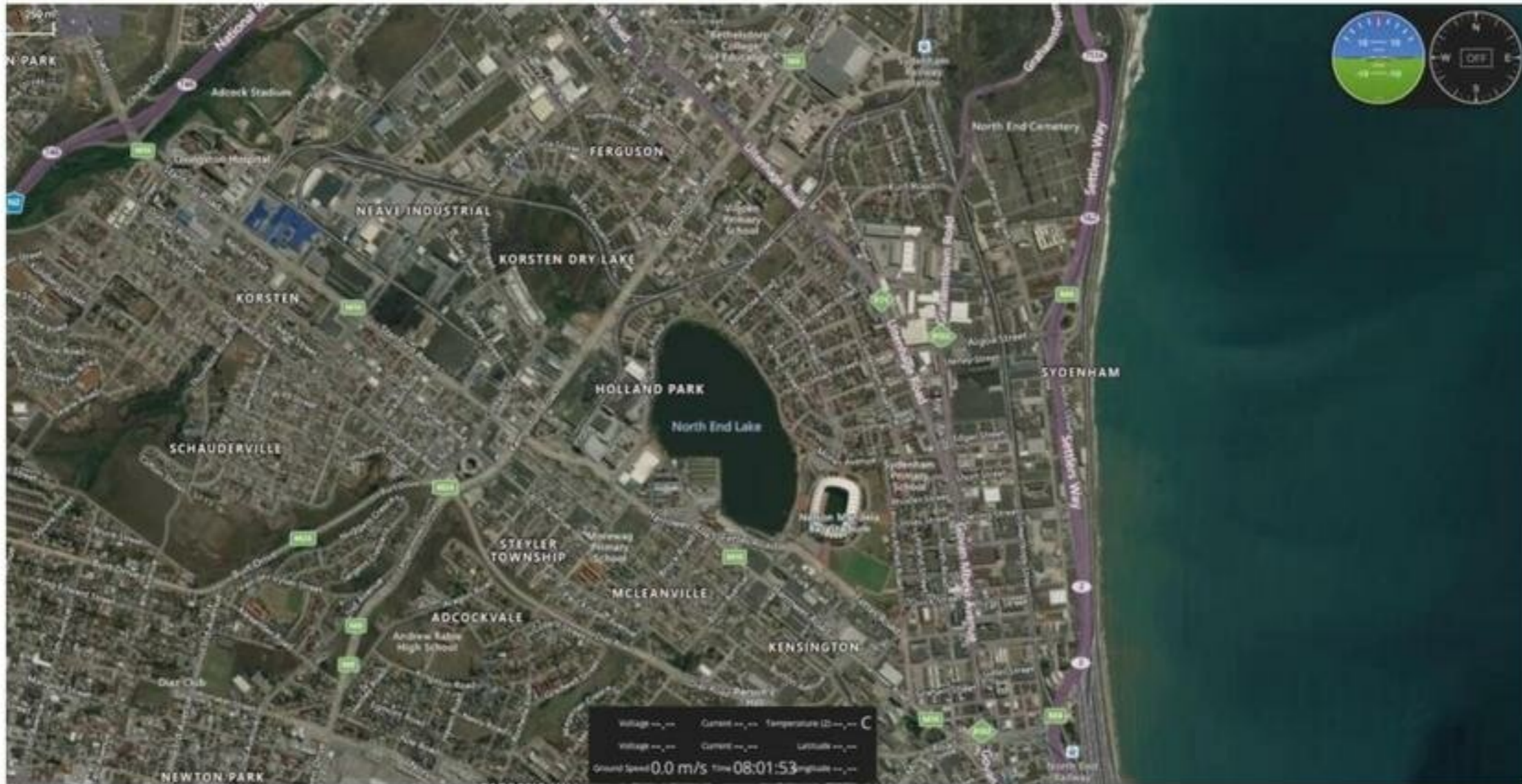
1. Selecting scan type
2. Path planning
3. Setting parameters
4. Monitoring progress
5. Process data



Operation – mission setup



North End Lake



North End Lake



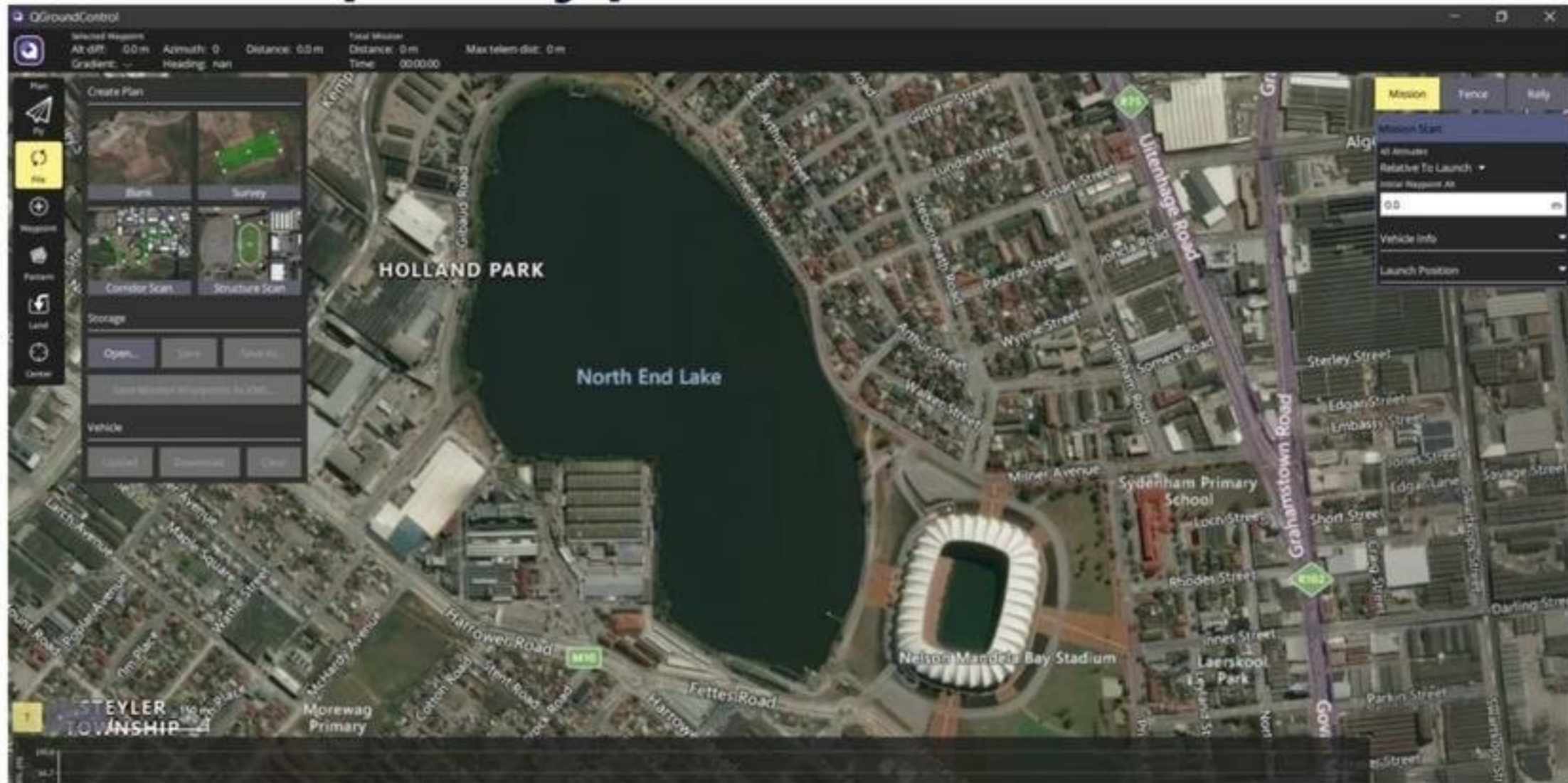
Mission setup - location

- Typical starting screen
- If connected GPS will auto home to boat location

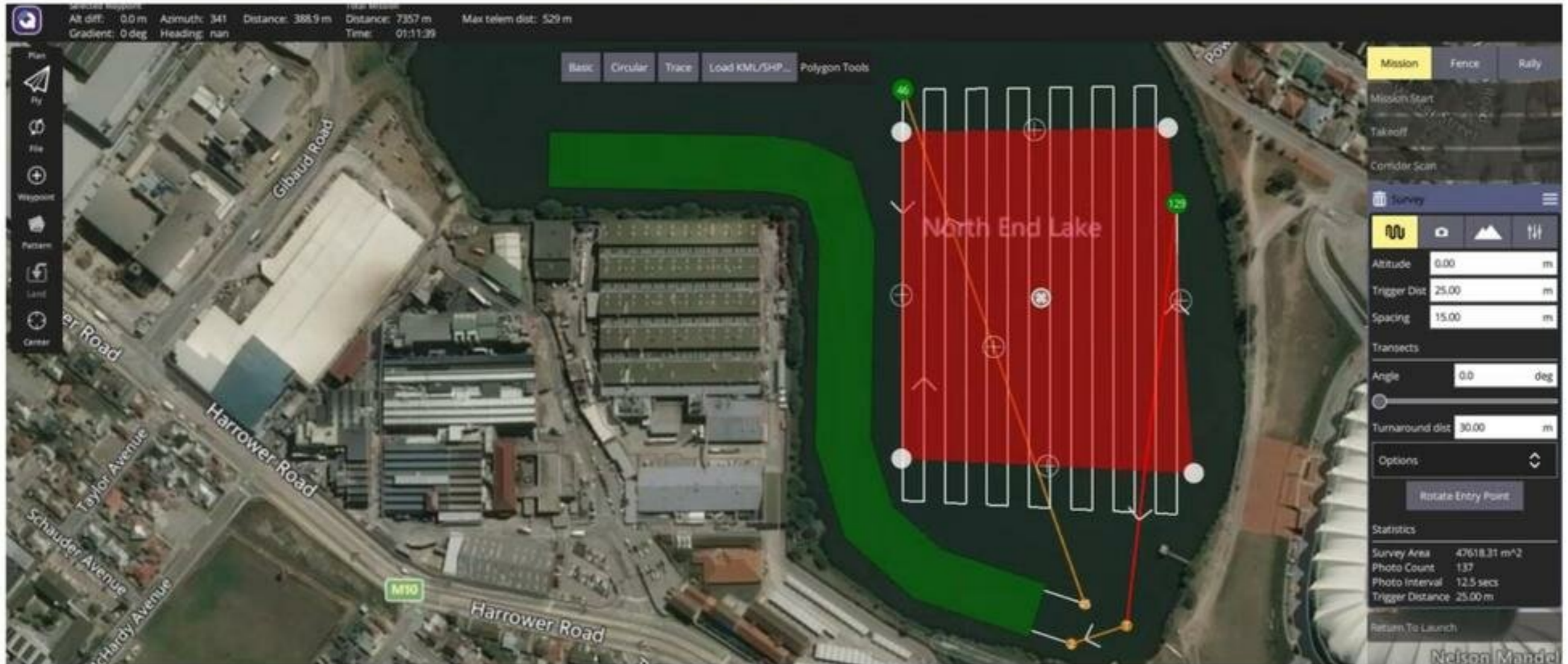


Mission setup – type

- Mission type
 - Blank
 - Survey
 - Corridor



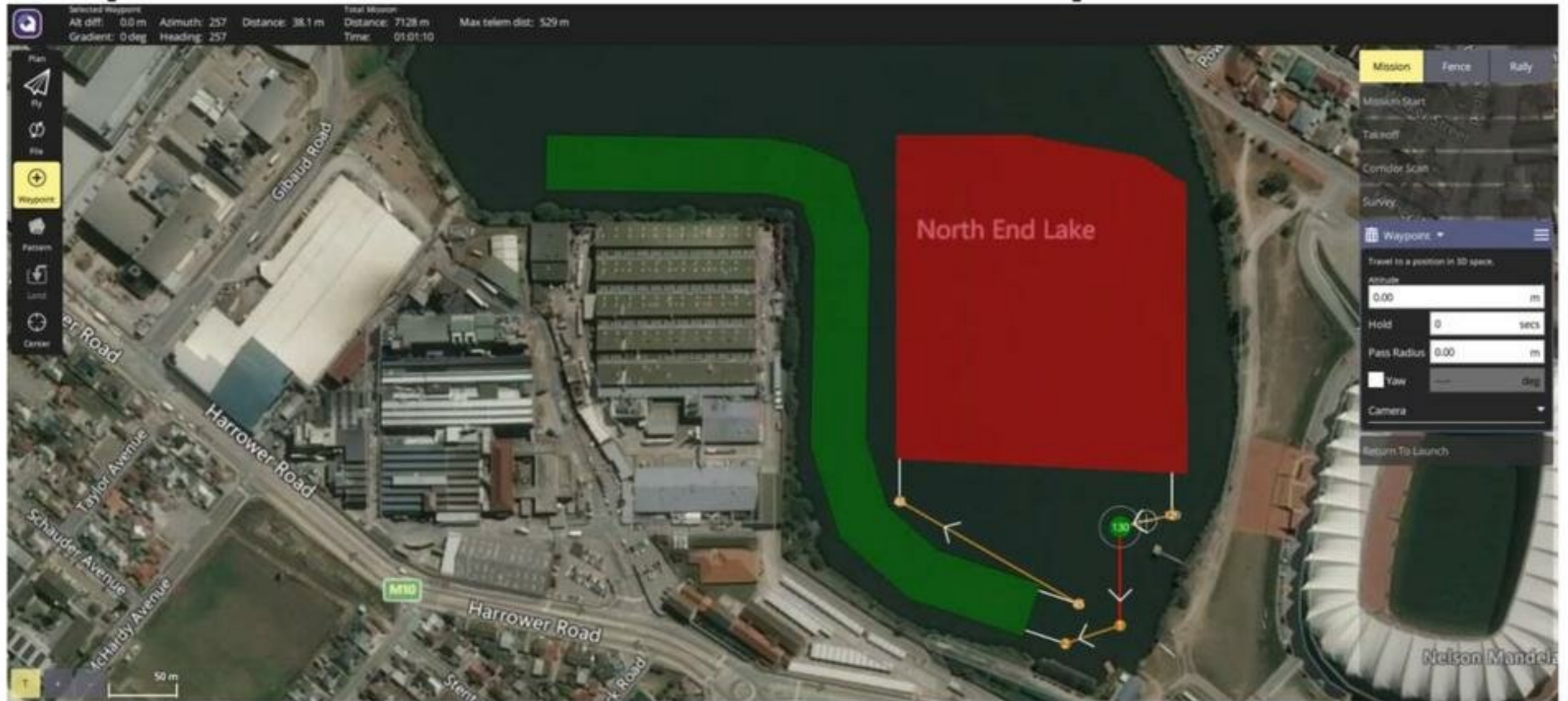
Mission setup - layout



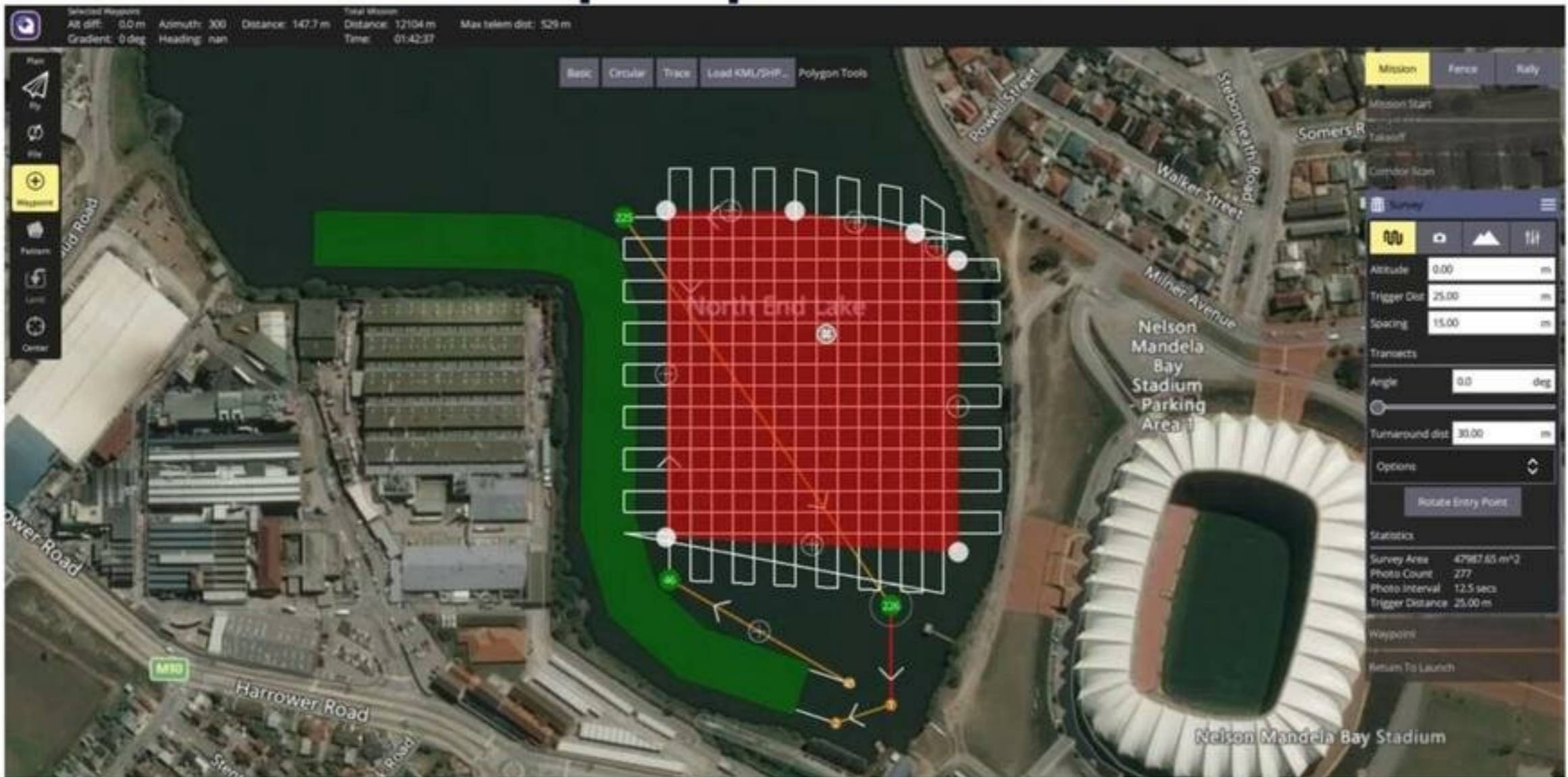
Mission setup - parameters



Operation – mission setup

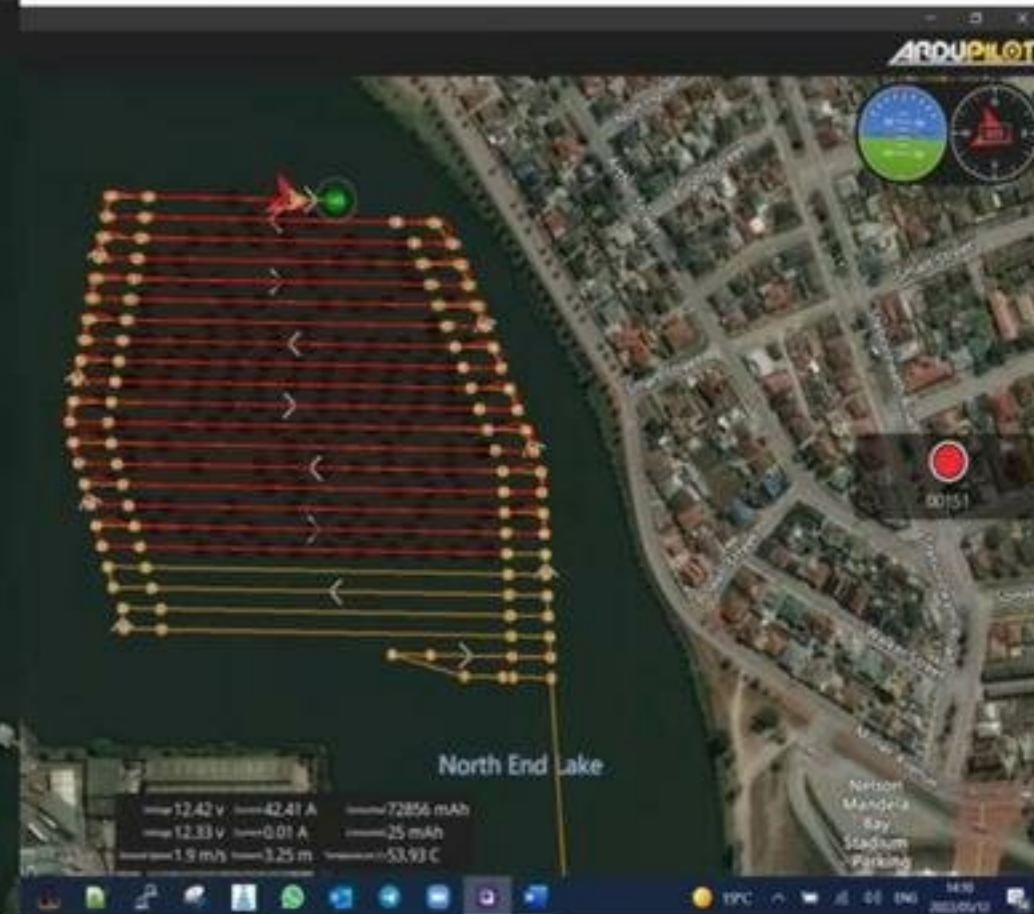
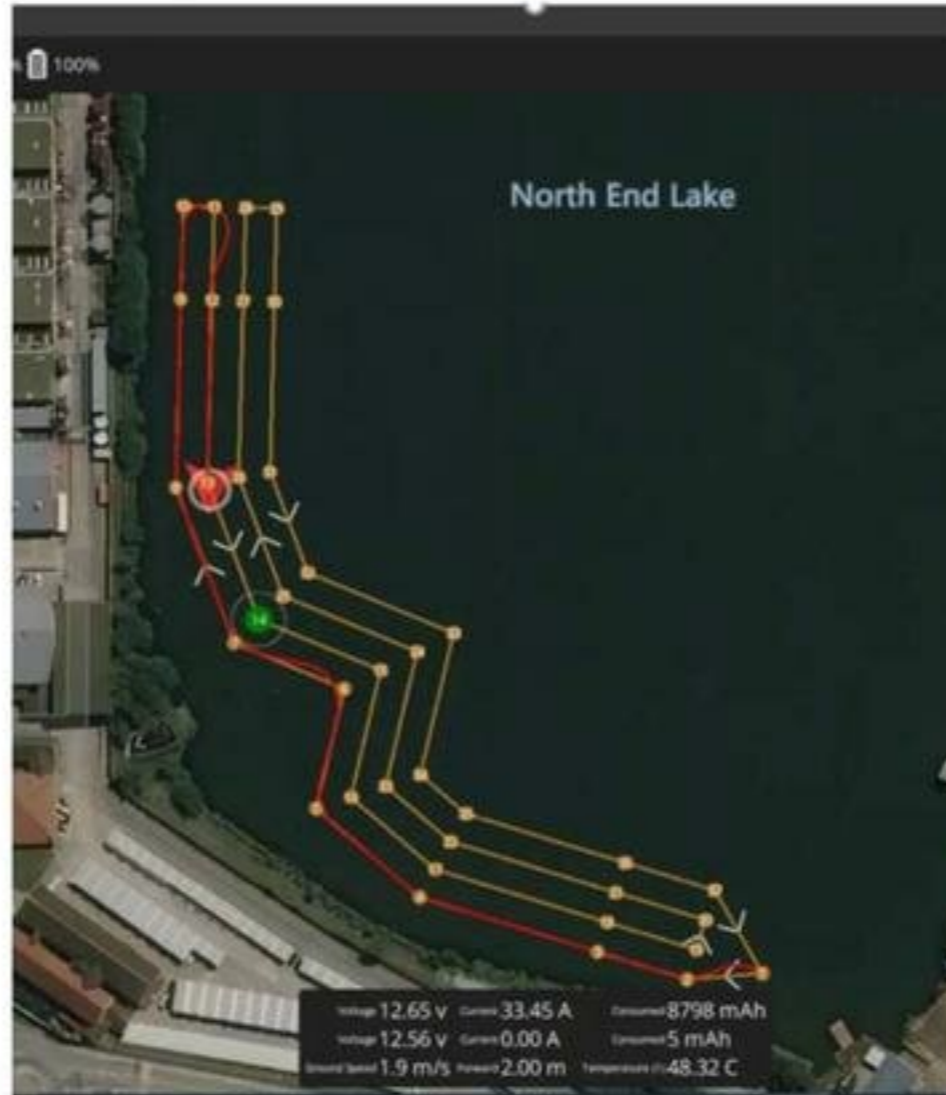


Mission setup - parameters



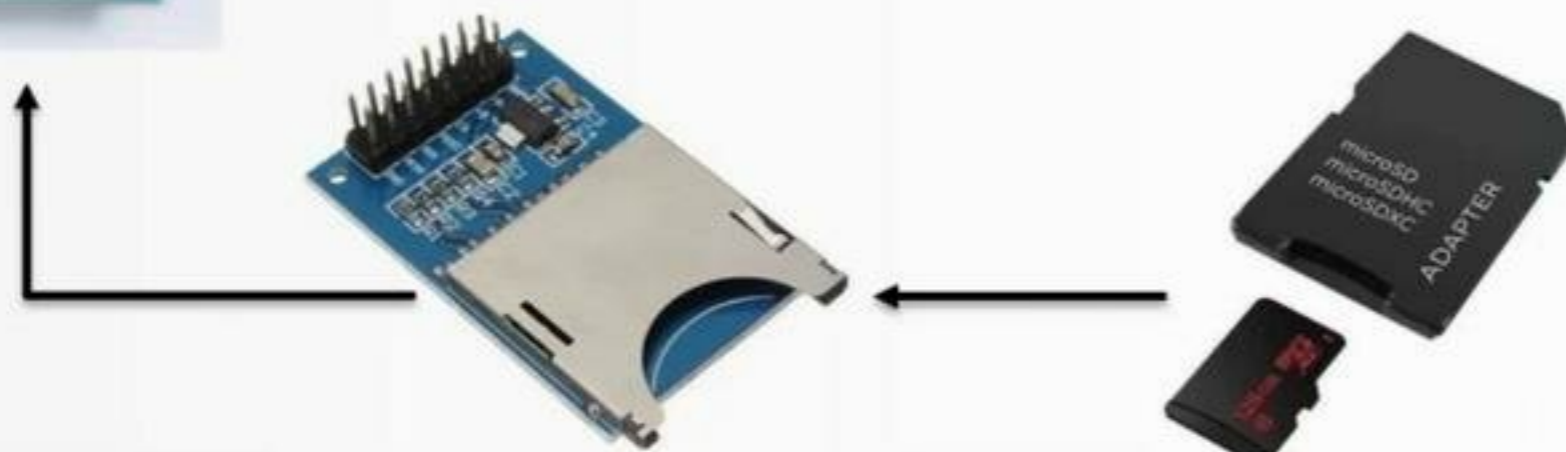
Corridor & survey scan - execution

- Path following
- Speed control
- Loiter at waypoint
- Change speed
- Execute command
- Smart RTL



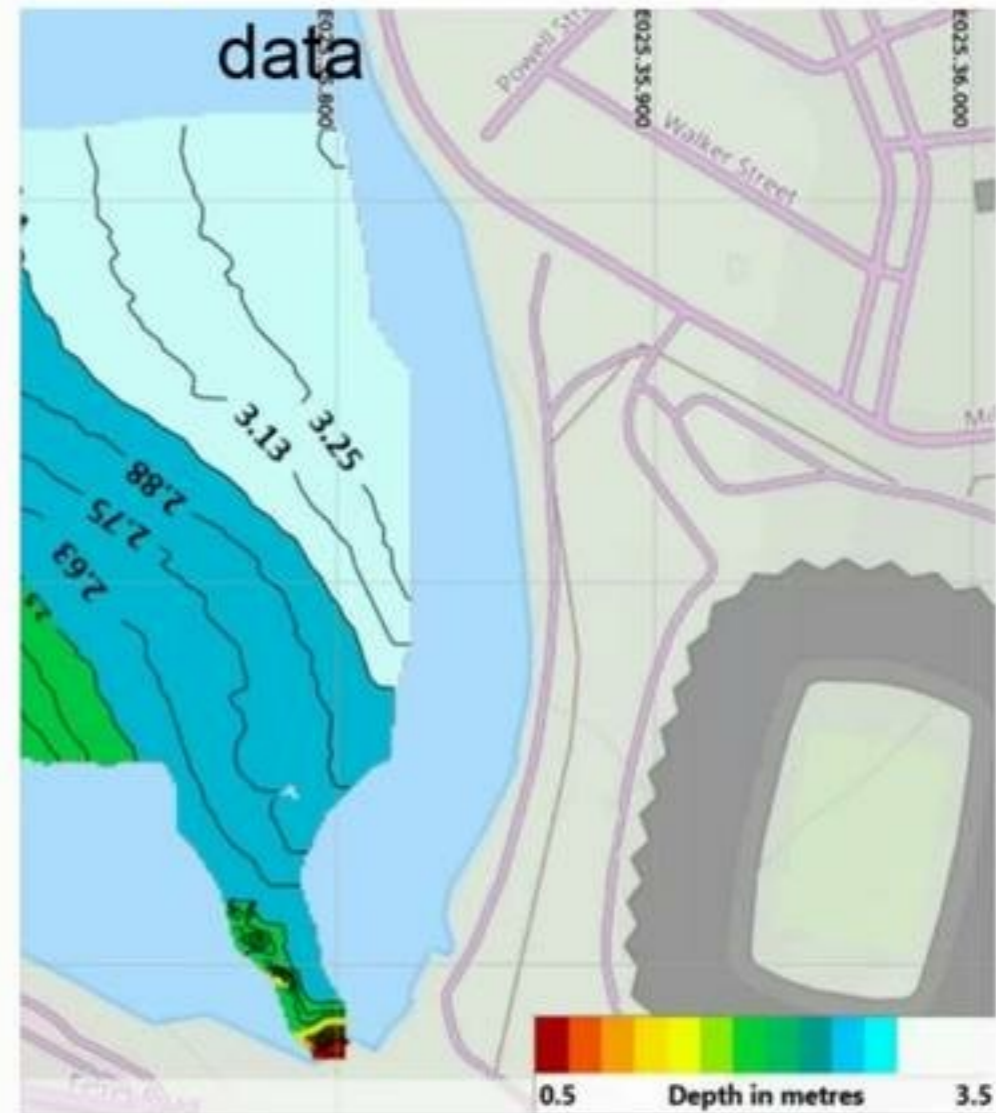


- Log files are created by companion computer
- Stored as .txt format on external SD card
- Separate log files from controller



Change the World

- Processed data



0.5 Depth in metres 3.5

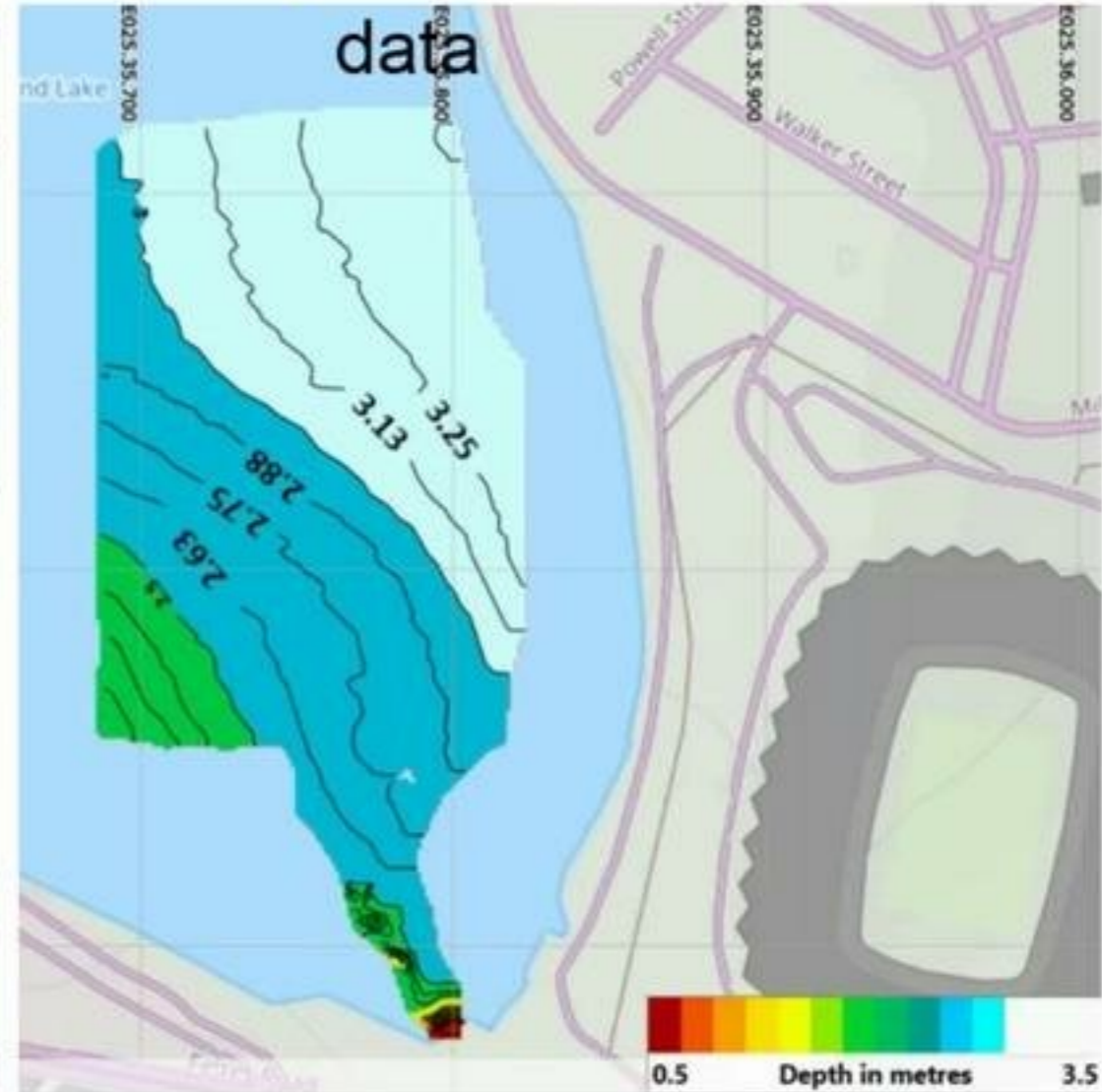
Change the World

Survey scan

- Planned path

- Data points

- Processed data

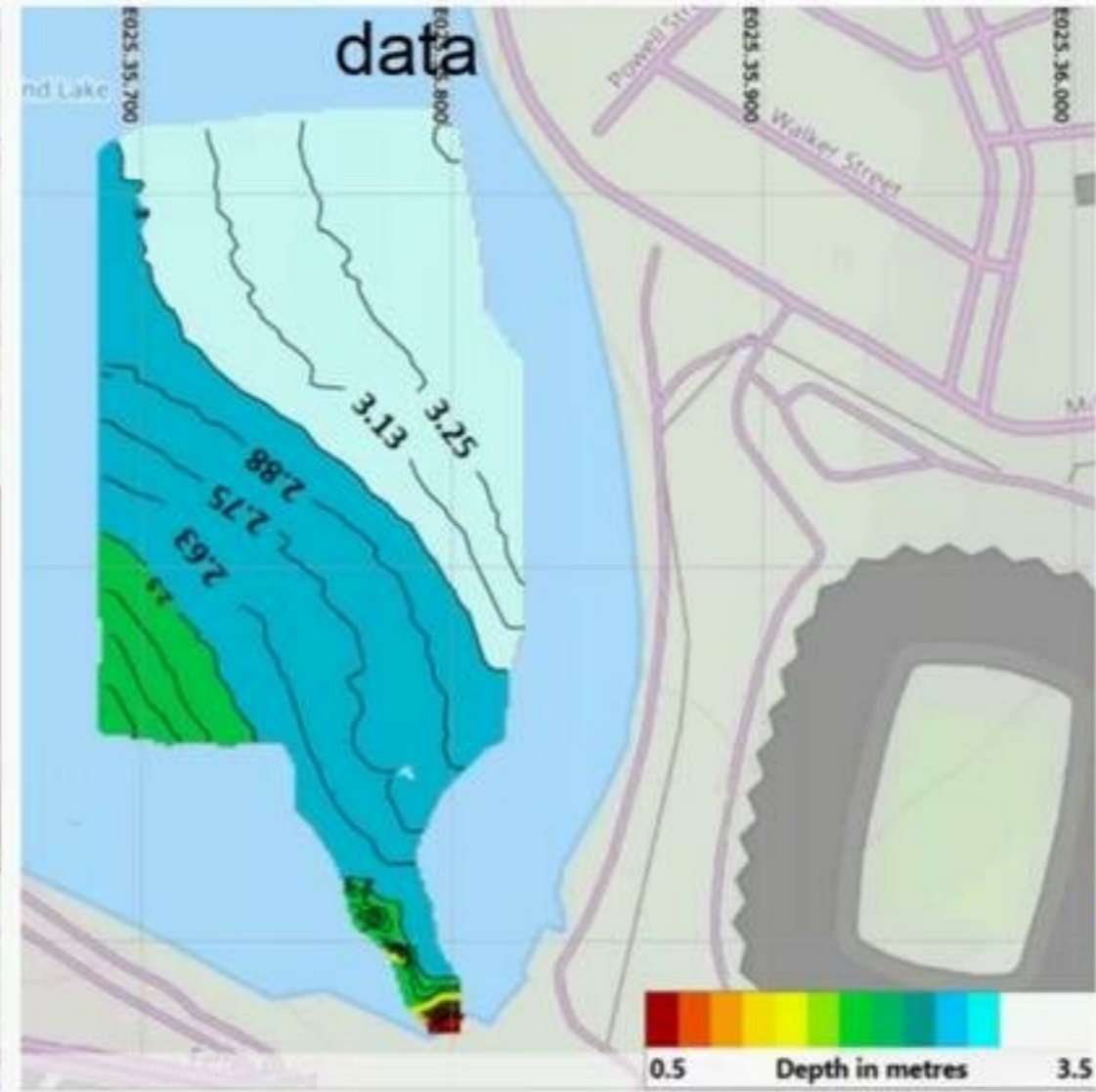


Survey scan

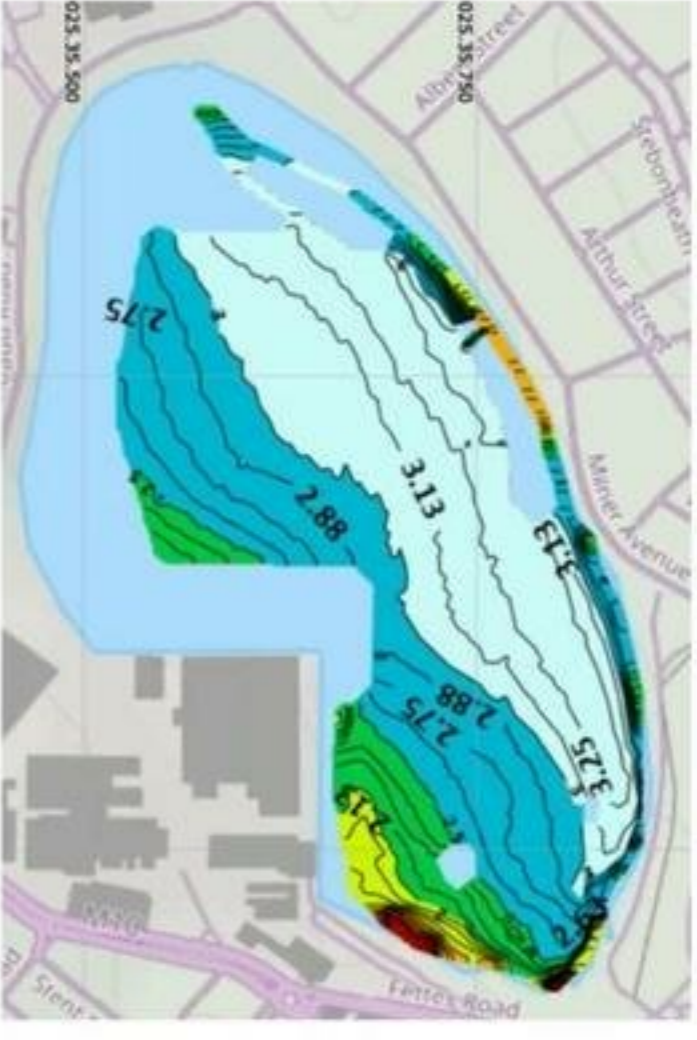
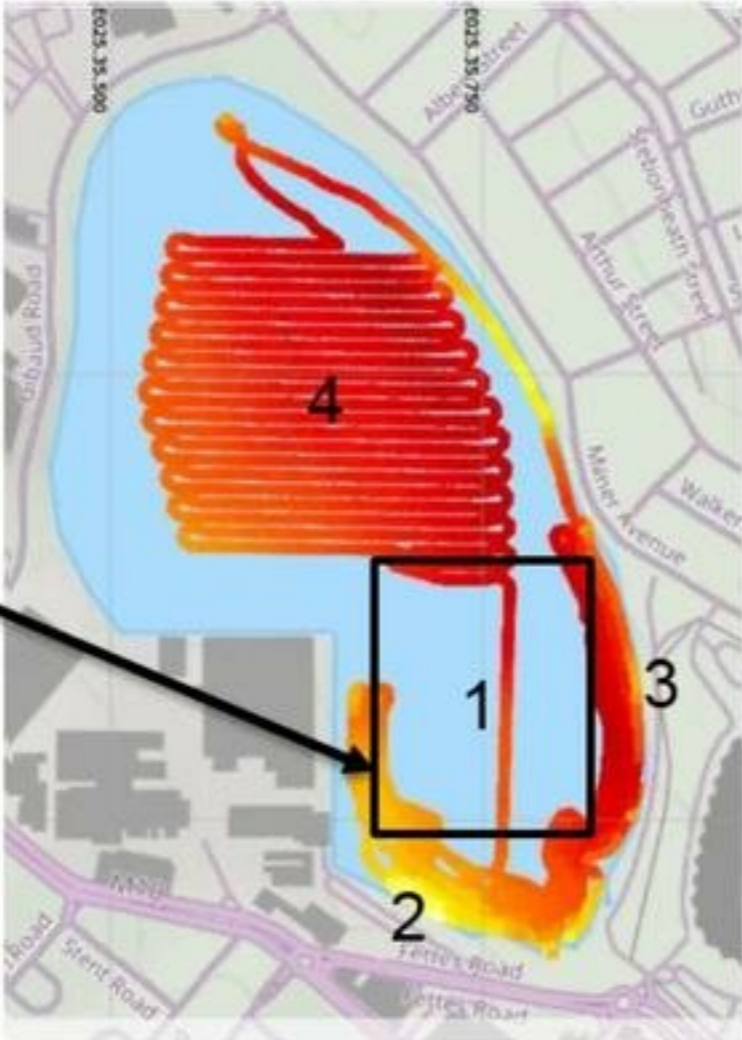
■ Data points

■ Processed data

d

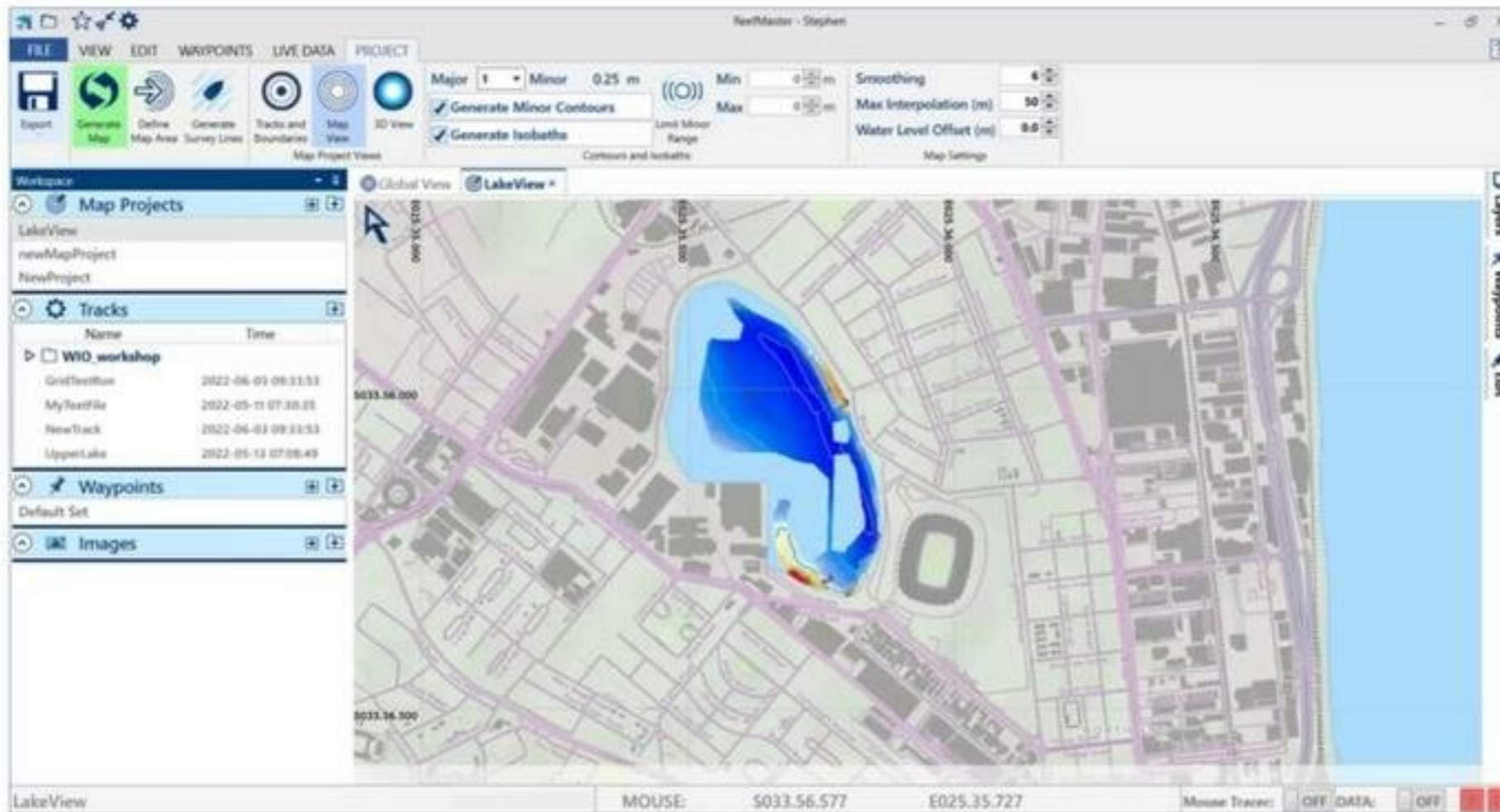


Combining scan data



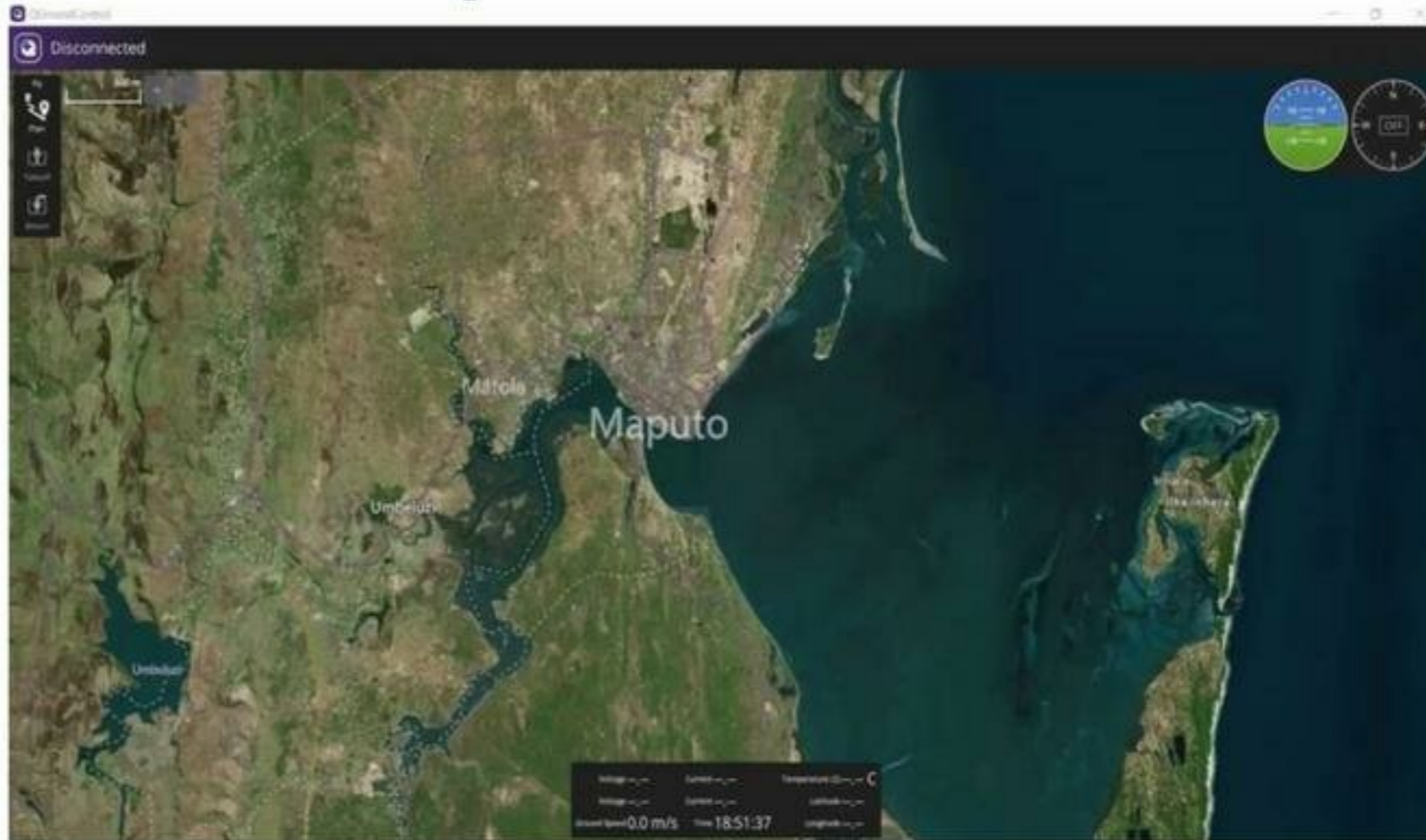
• Combined

Post processing



- Reef master – sonar viewer
- Create 3D bathymetric maps
- Side scan

Mozambique demo - location



Mozambique demo - location



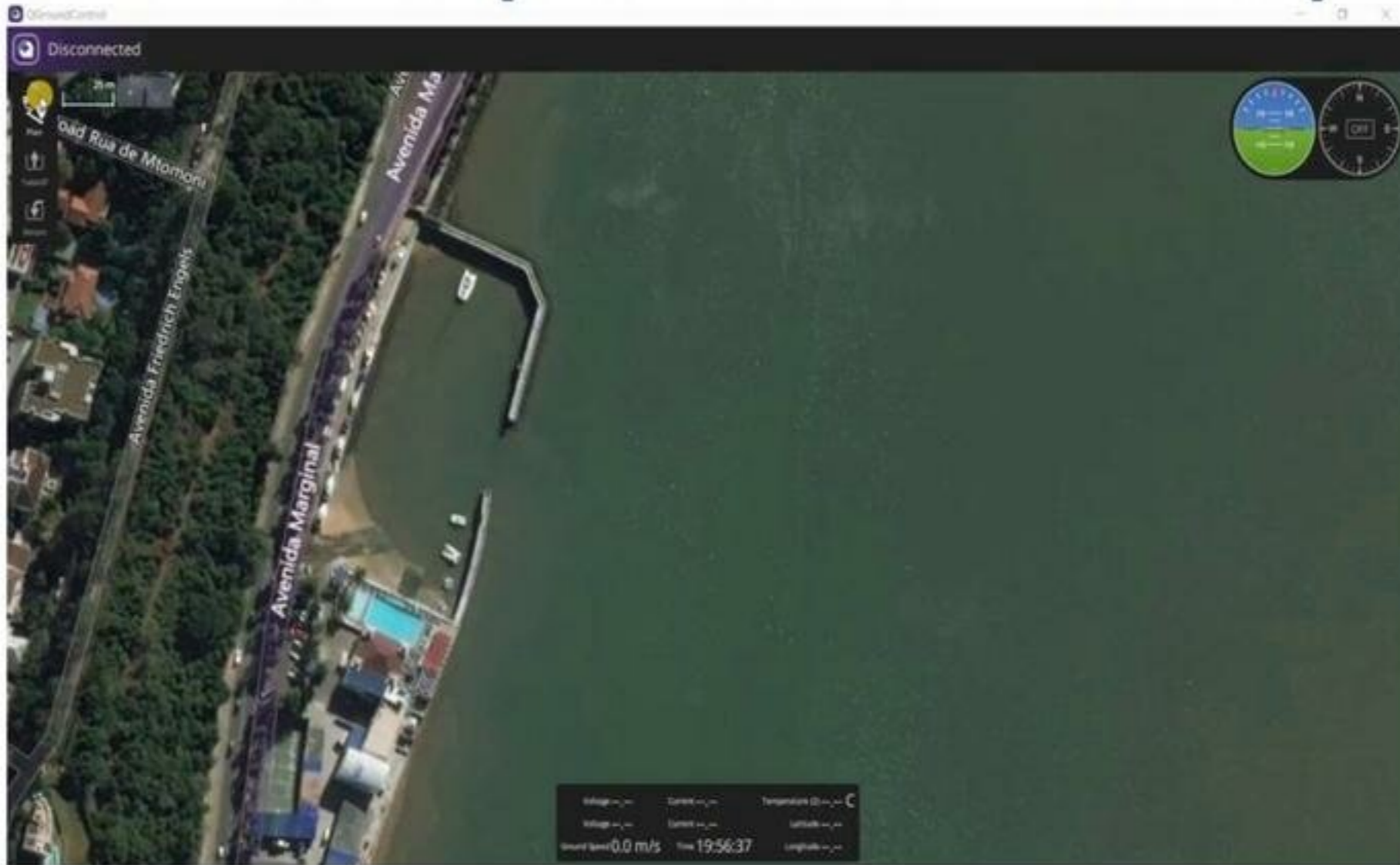
Mozambique demo - location



Mozambique demo - location



Mozambique demo - setup

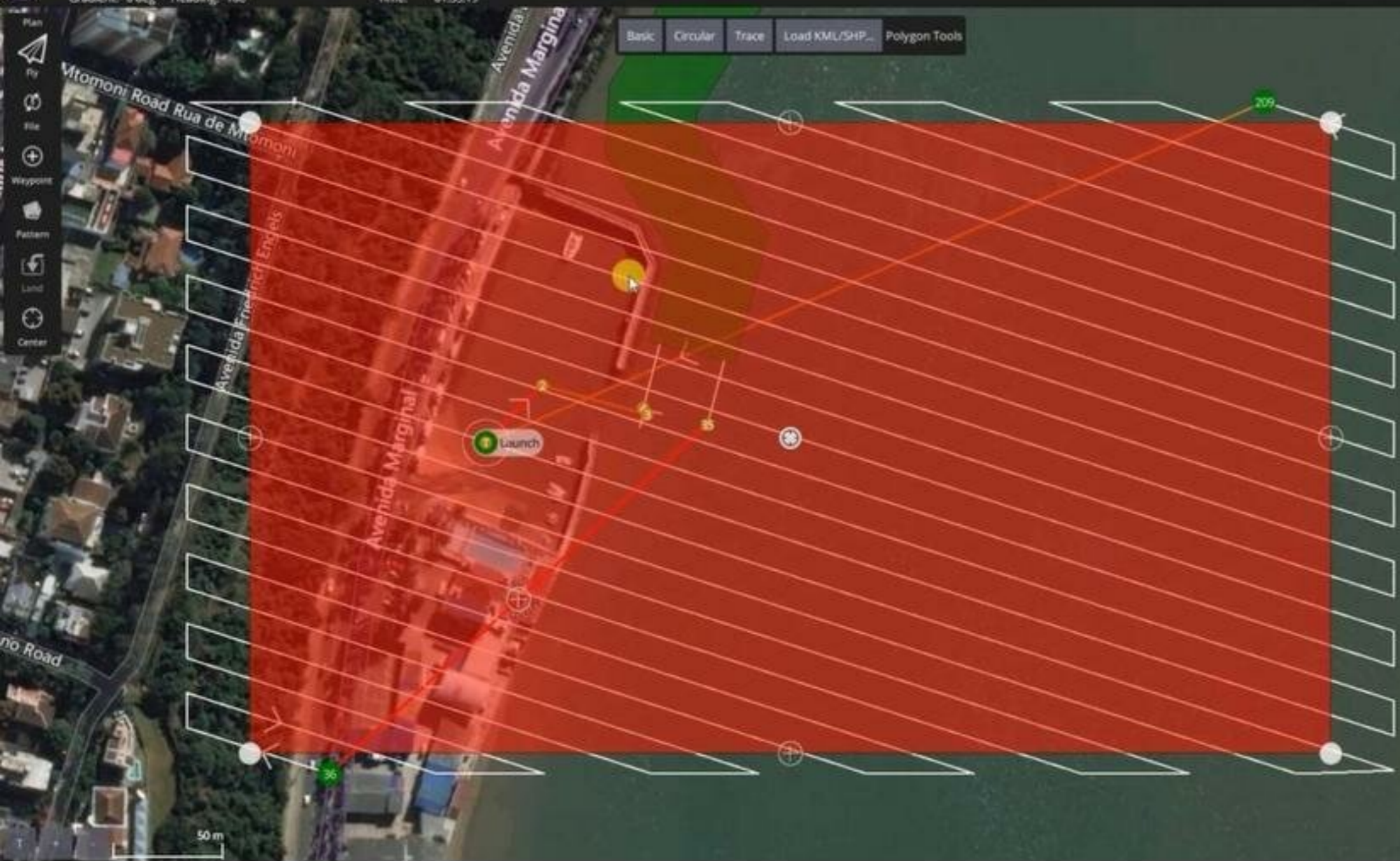


Selected Waypoint
Alt diff: 0.0 m Azimuth: 227 Distance: 232.7 m
Gradient: 0 deg Heading: 106

Total Mission
Distance: 13342 m Max telem dist: 563 m
Time: 01:55:19

Basic Circular Trace Load KML/SHP... Polygon Tools

- Plan
- File
- Waypoint
- Pattern
- Launch
- Center



Mission Fence Rally

- Mission Start
- Takeoff
- Waypoint
- Waypoint
- Corridor Scan

Survey

Altitude 0.00 m

Trigger Dist 25.00 m

Spacing 15.00 m

Transsects

Angle 108.0 deg

Turnaround dist 30.00 m

Options

Rotate Entry Point

Statistics

Survey Area 139574.34 m²

Photo Count 389

Photo Interval 12.5 secs

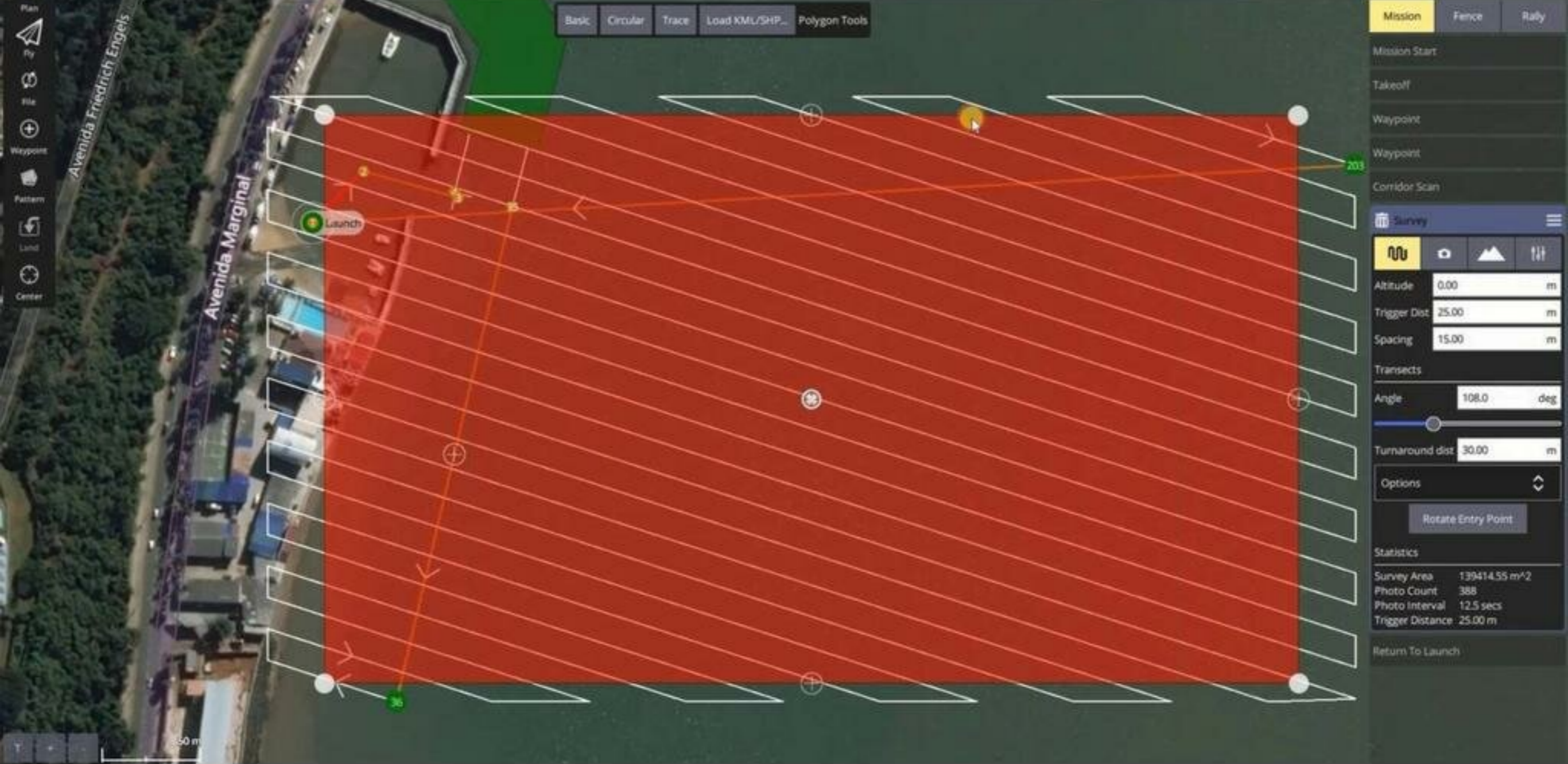
Trigger Distance 25.00 m

Return To Launch

Selected Waypoint
Alt diff: 0.0 m Azimuth: 193 Distance: 255.6 m
Gradient: 0 deg Heading: 106

Total Mission
Distance: 13365 m Max telem dist: 563 m
Time: 01:57:28

Basic Circular Trace Load KML/SHP... Polygon Tools



Mission Fence Rally

- Mission Start
- Takeoff
- Waypoint
- Waypoint
- Corridor Scan

Survey

Altitude 0.00 m
Trigger Dist 25.00 m
Spacing 15.00 m

Transects

Angle 108.0 deg

Turnaround dist 30.00 m

Options

Rotate Entry Point

Statistics

Survey Area 139414.55 m²
Photo Count 388
Photo Interval 12.5 secs
Trigger Distance 25.00 m

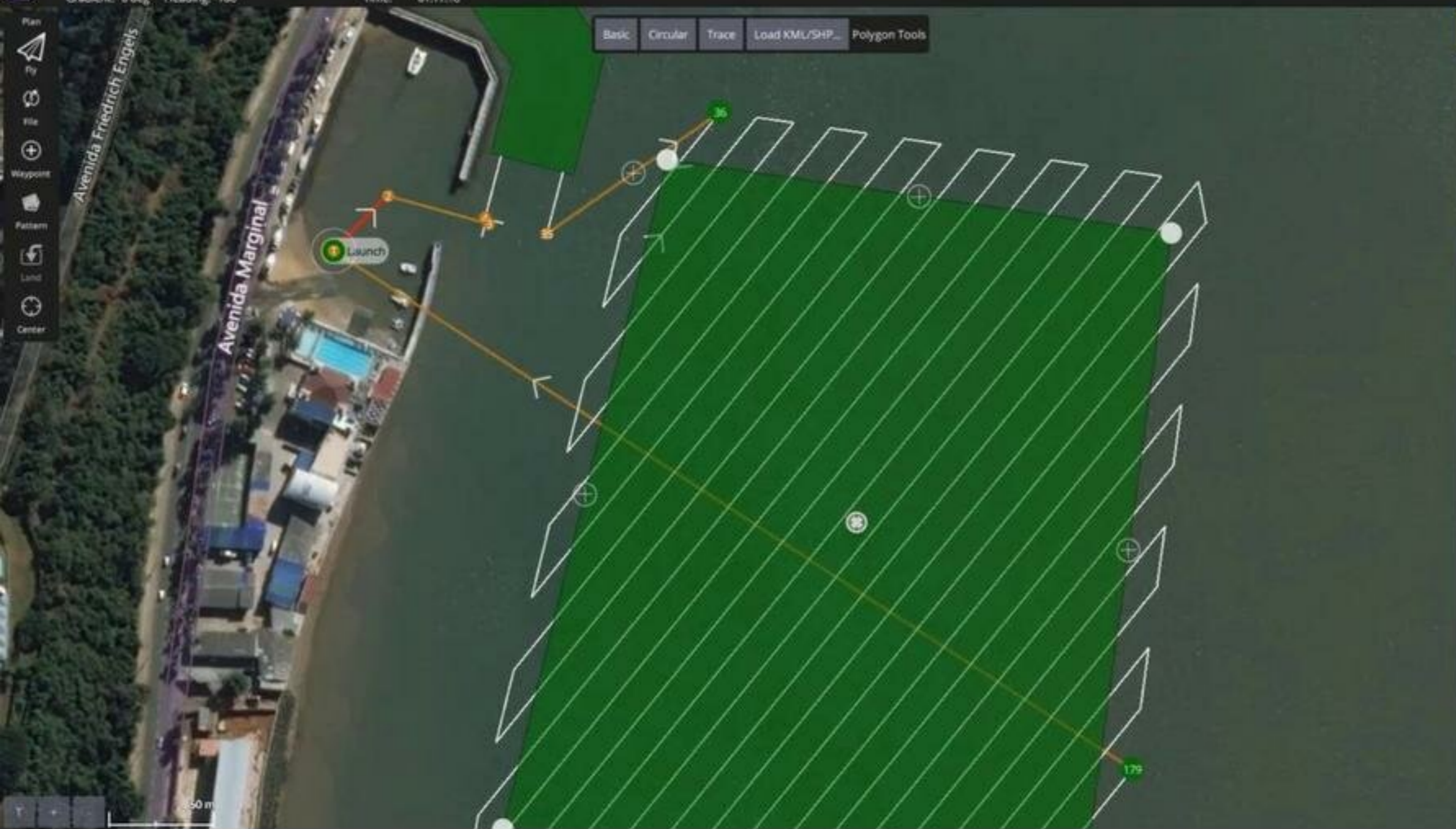
Return To Launch

Selected Waypoint
Alt diff: 0.0 m Azimuth: 55 Distance: 99.4 m
Gradient: 0 deg Heading: 106

Total Mission
Distance: 8699 m Max telem dist: 365 m
Time: 01:17:18

- Plan
- Fly
- File
- Waypoint
- Pattern
- Land
- Center

Basic Circular Trace Load KML/SHP... Polygon Tools



Mission Fence Rally

- Mission Start
- Takeoff
- Waypoint
- Waypoint
- Corridor Scan

Survey

Altitude 0.00 m
Trigger Dist 25.00 m
Spacing 15.00 m

Transects

39.0 deg

Turnaround dist 30.00 m

Options

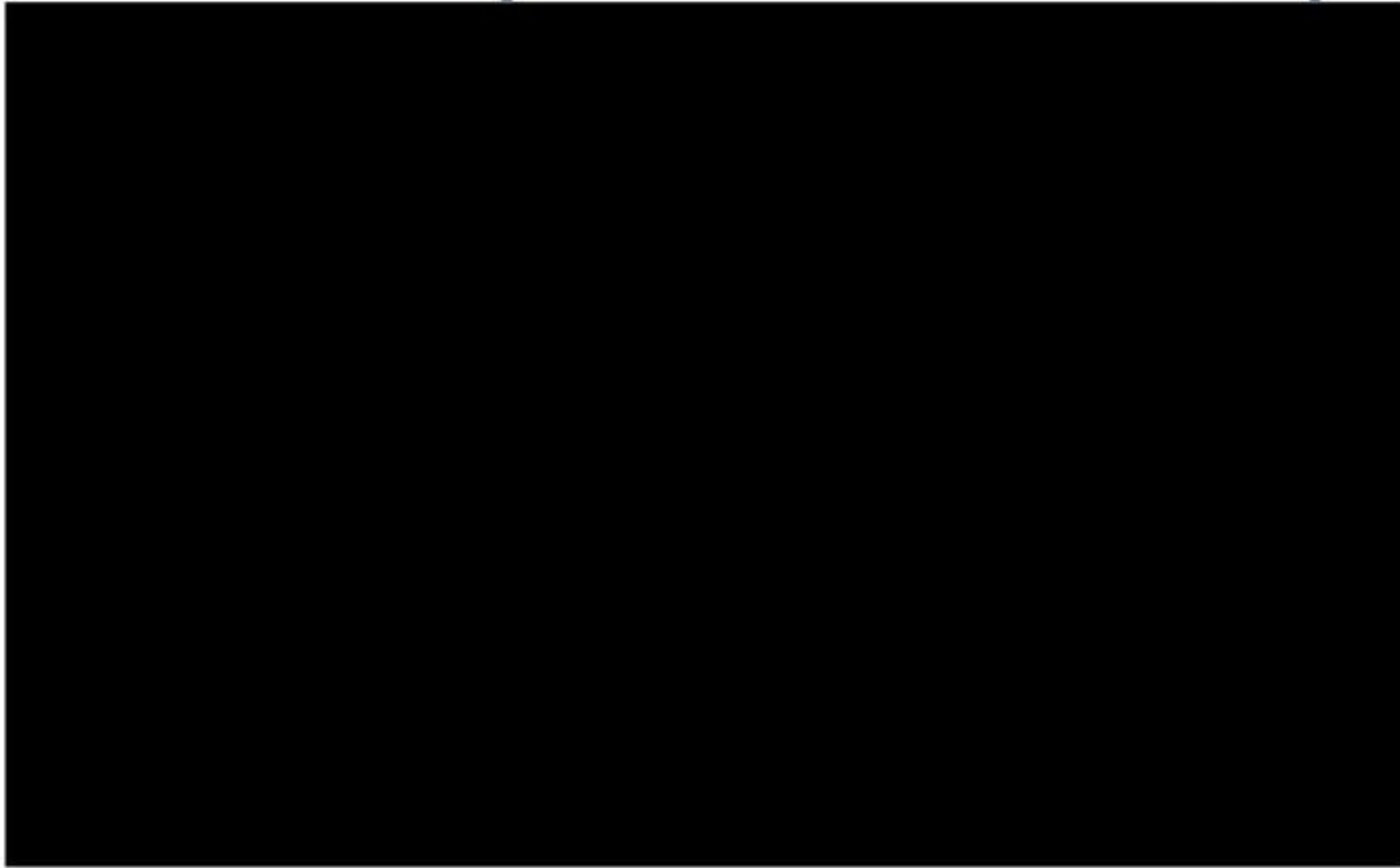
Rotate Entry Point

Statistics

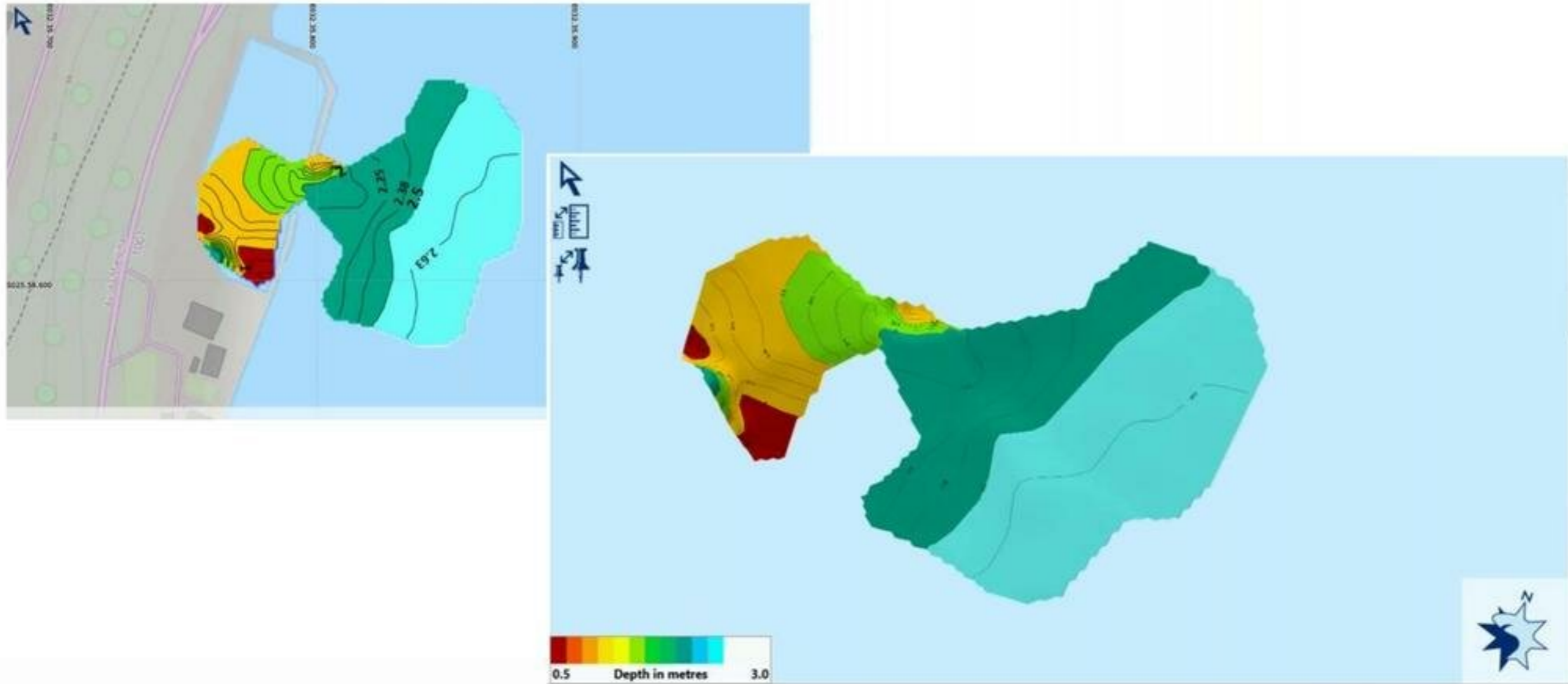
Survey Area 79804.99 m²
Photo Count 223
Photo Interval 12.5 secs
Trigger Distance 25.00 m

Return To Launch

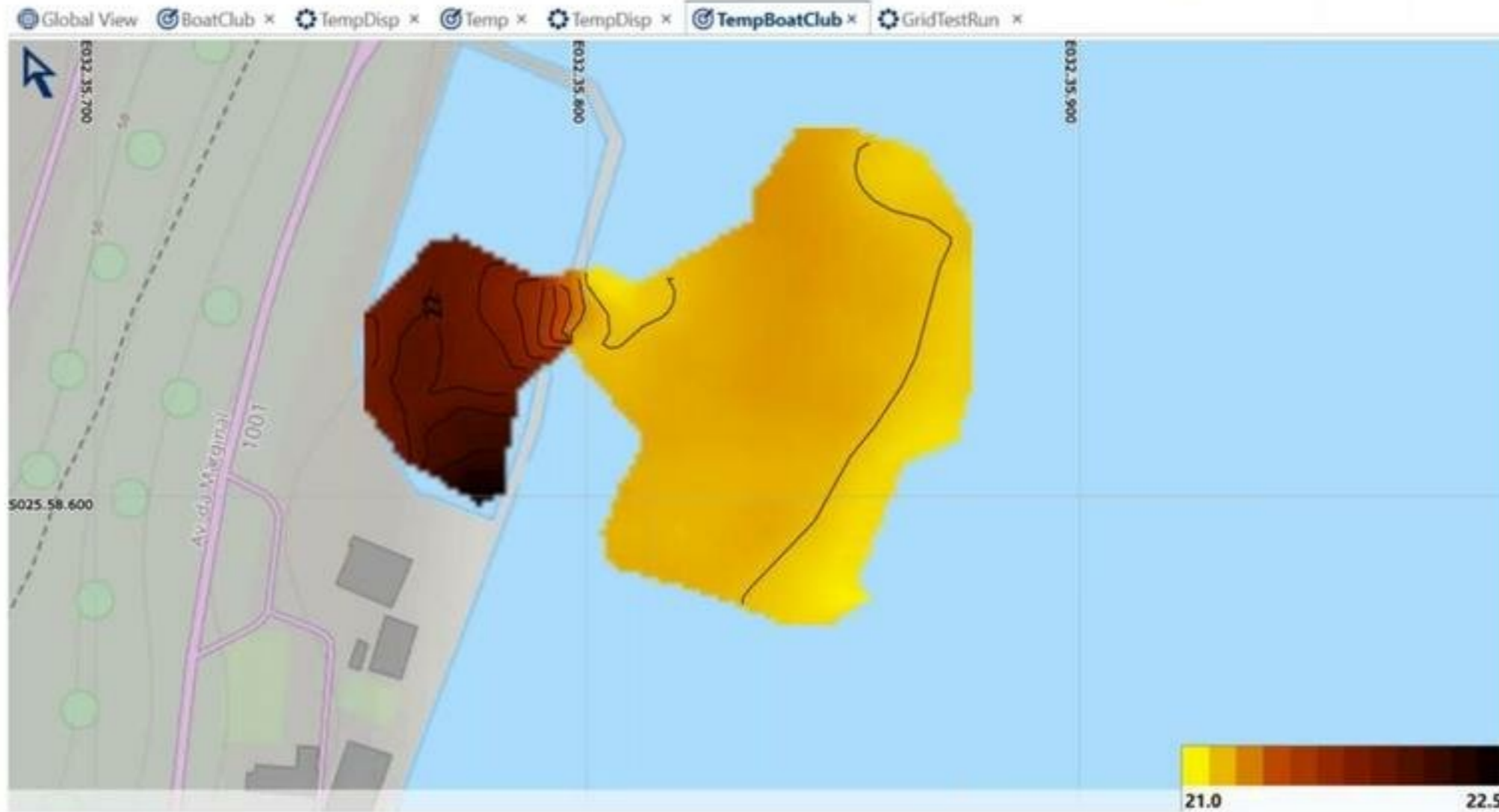
Mozambique demo - setup



Mozambique demo - Depth



Mozambique demo - Temperature



Thank you

Questions?