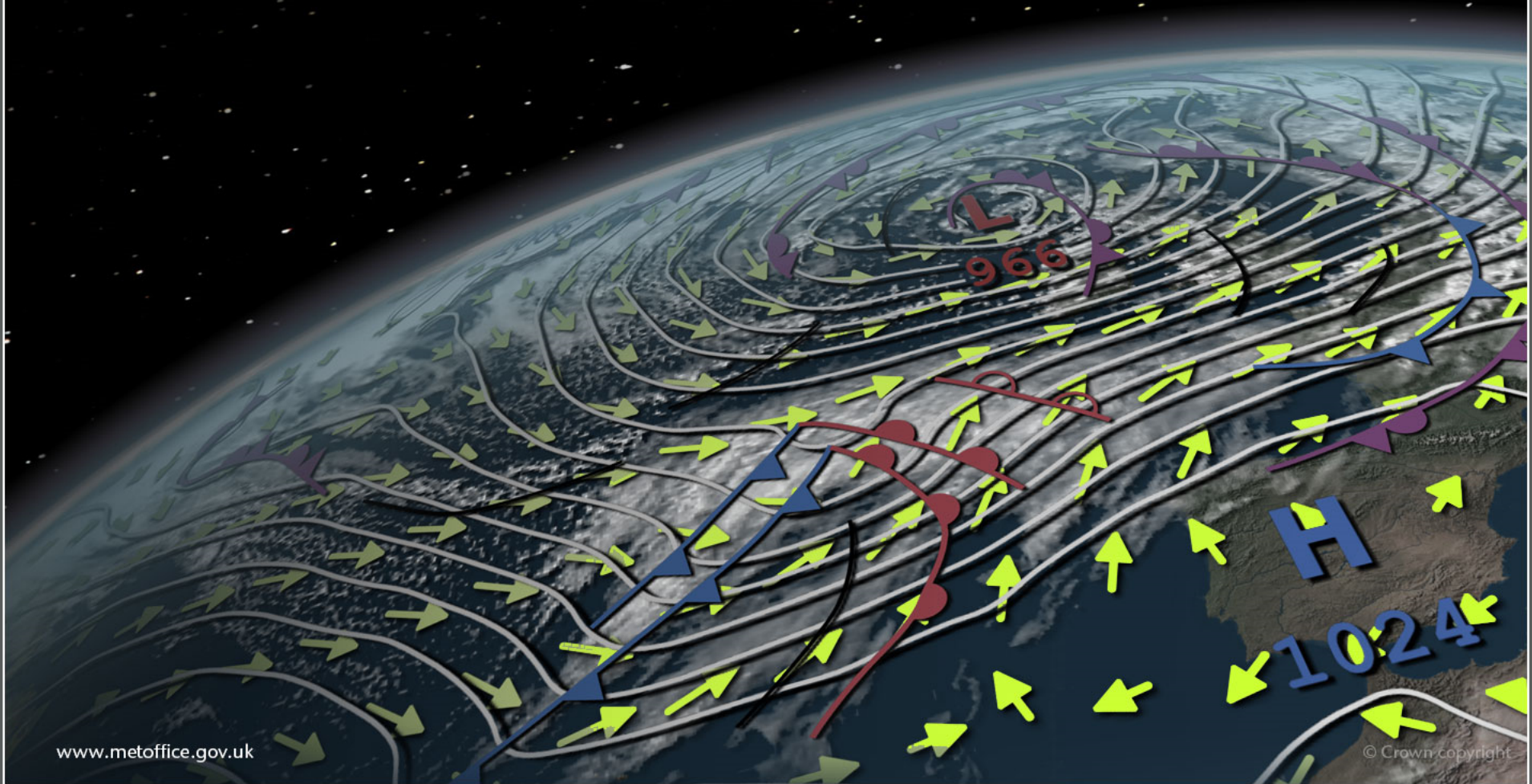




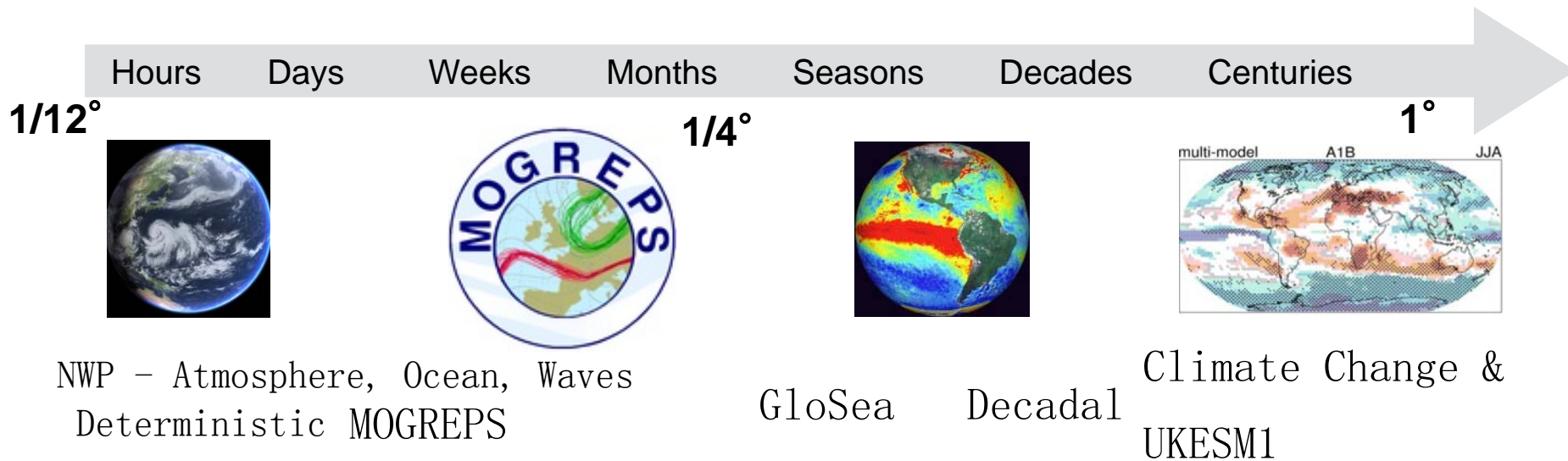
OMIP/CMIP at Met Office

Helene Hewitt plus many others



Global Physical Modelling

Unified Prediction across Timescales

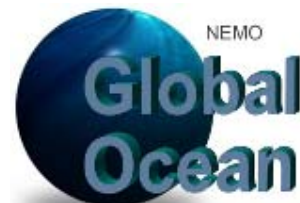


Component Models

GA7, GL7, GO6, GSI7/8

Coupled AOIL Model

GC3.0



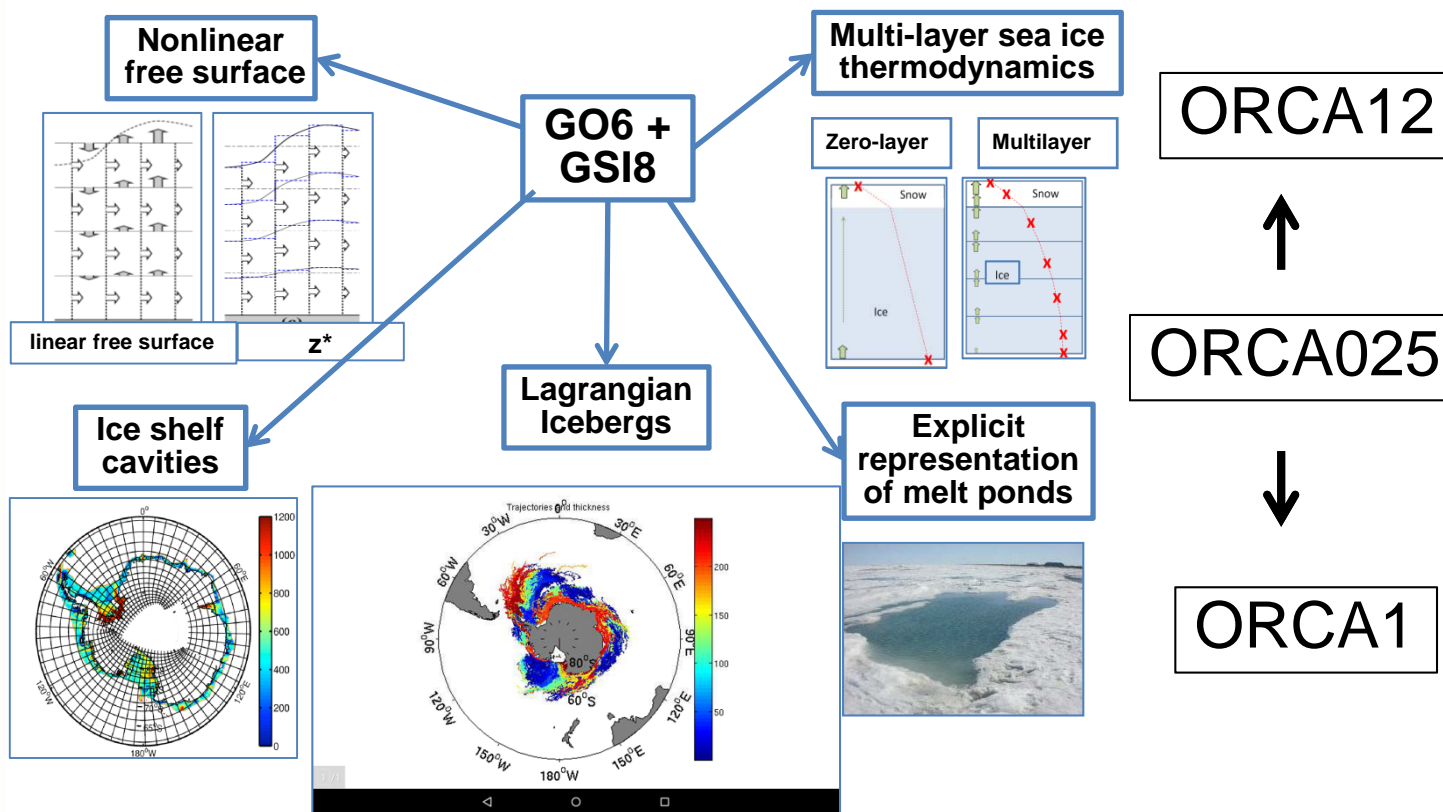


Met Office
Hadley Centre

New modelling capabilities at GO6+GSI8

Traceable hierarchy at GO6

Enabling better understanding of the impacts of resolution on climate



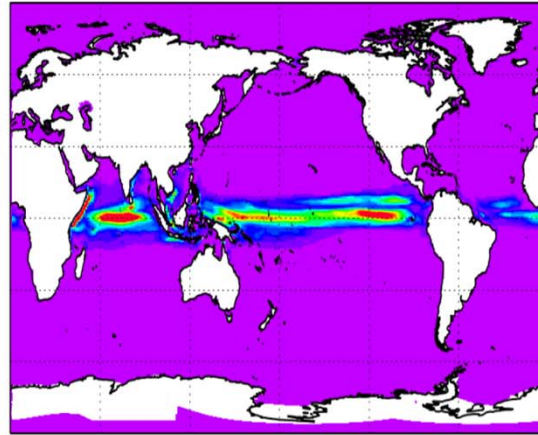
Storkey et al., in prep.



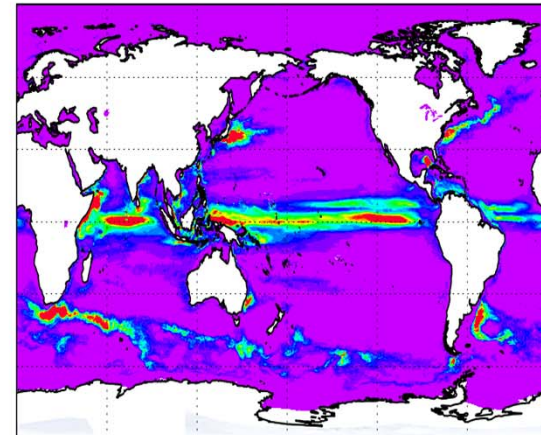
Met Office
Hadley Centre

Eddy kinetic energy

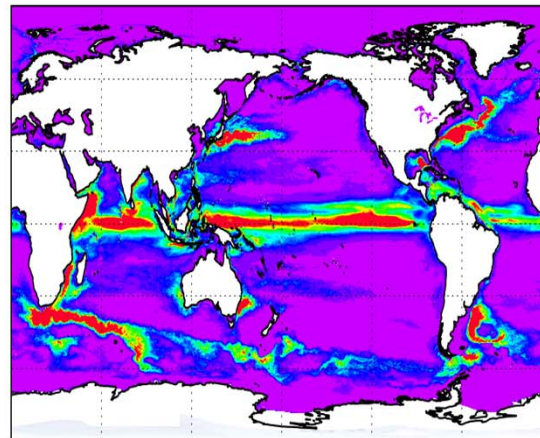
1°



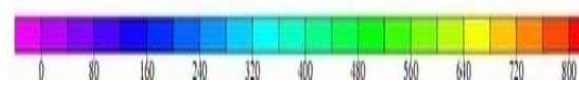
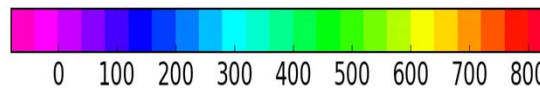
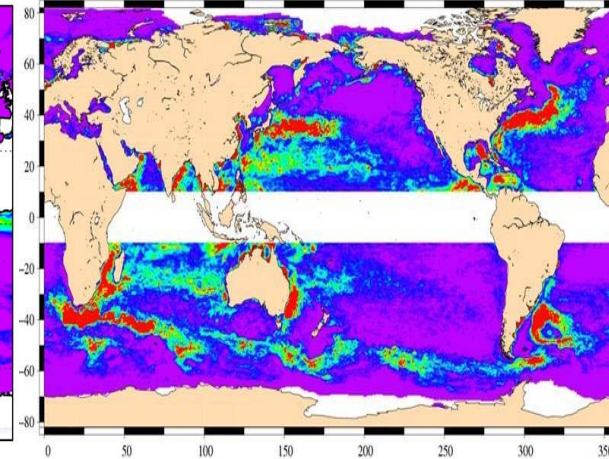
1/4°



1/12°



AVISO

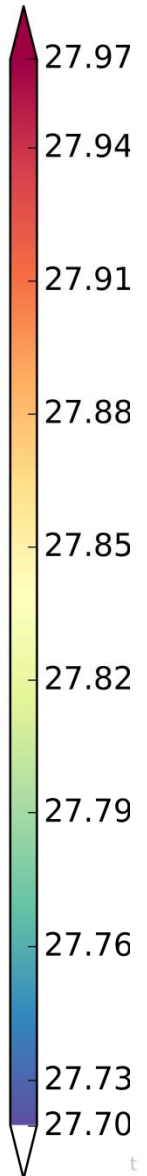
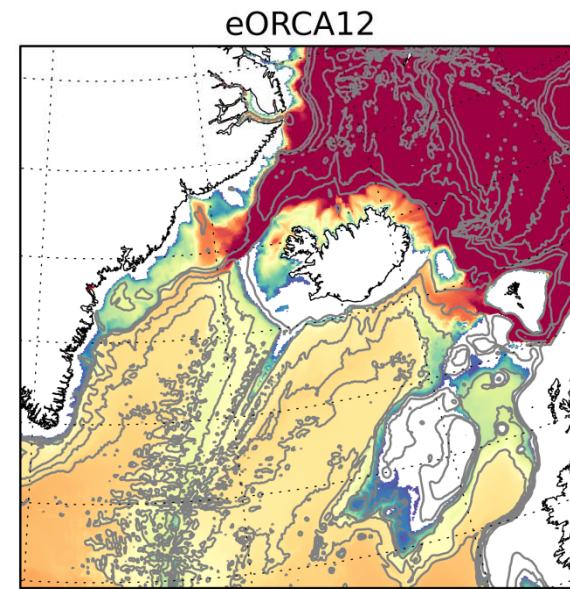
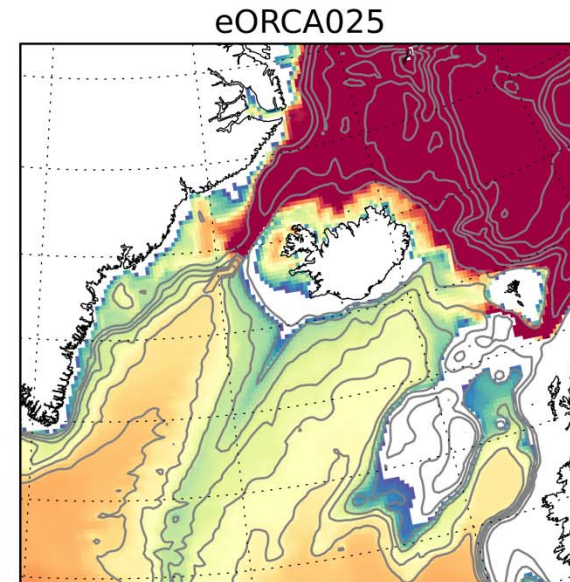
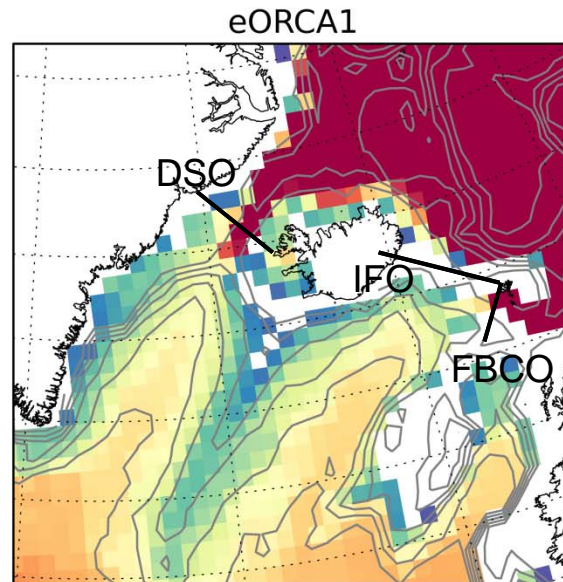


Mathiot et al., in prep



Met Office
Hadley Centre

Topographic control at overflows



	Obs.	1°	1/4°	1/12°
DSO	2.9	2.0	2.1	2.4
IFO	1.0	0.0	0.0	0.2
FBCO	2.0	1.6	2.2	2.3

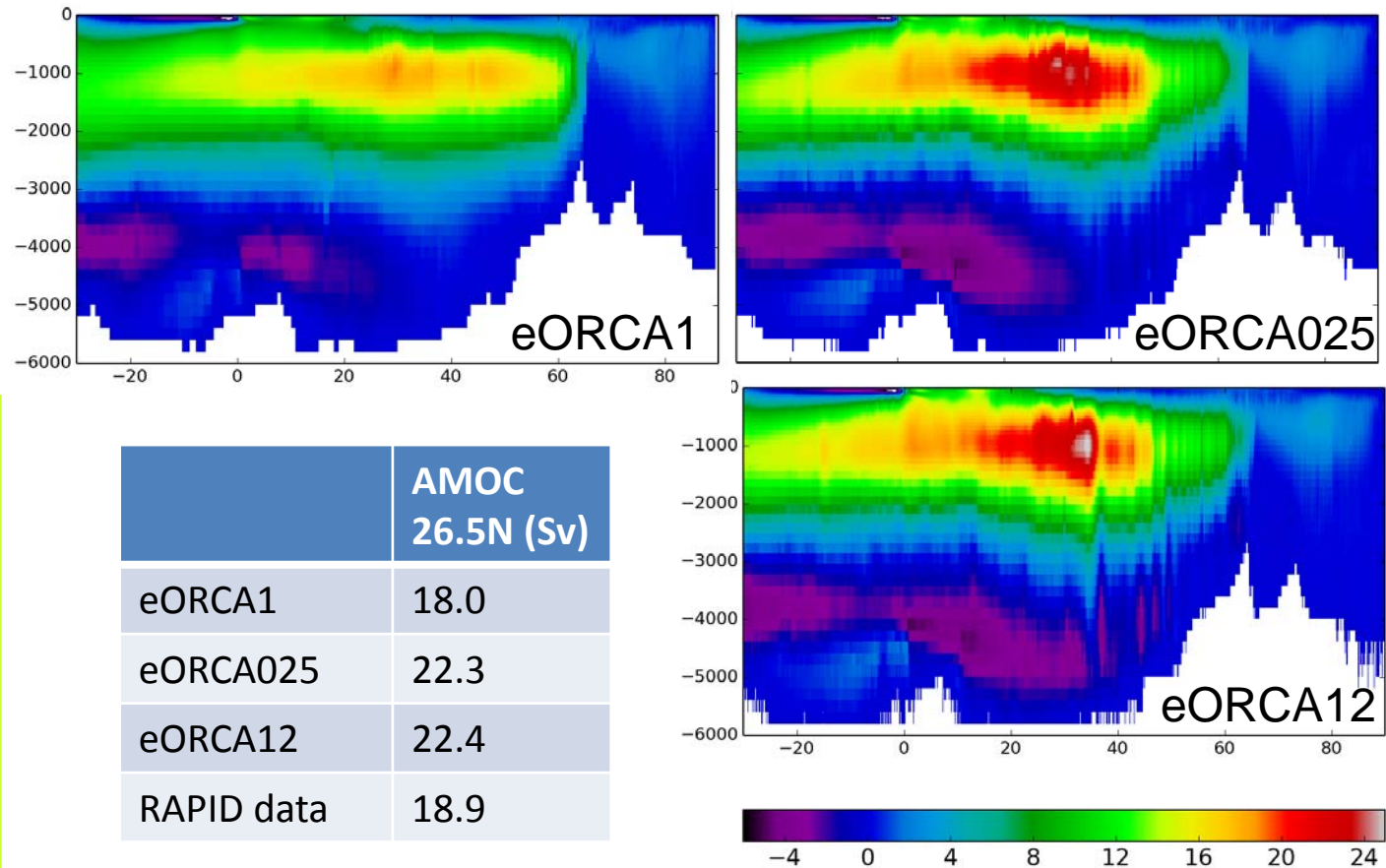
Mathiot et al., in prep



Met Office
Hadley Centre

AMOC
stronger at
'eddy
resolving'
resolution

AMOC across resolutions



Mathiot et al., in prep



Met Office
Hadley Centre

Status

- GO6 hierarchy defined (except for a few possible changes for 1 degree model) [Storkey et al., Mathiot et al., both in prep]
- GO6 ocean component of GC3 coupled model which is being assessed for seasonal and decadal as well as climate simulations
- GC3 coupled model running at N216-ORCA025 (physical climate model for DECK and MIPs including Decadal MIP), N96-ORCA1 (underpins UKESM for DECK and other MIPs) and N512-ORCA12 (for HIRES-MIP and EU PRIMAVERA)
- NOC will run OMIP expts with GO6 at ORCA1 and ORCA025 resolution